



Academic Orientation for Student-Athletes

2012 - 2013

Academic Services for Student-Athletes

Fill out Paperwork

- FERPA – General Information
- General Information Sheet
- Study Hall Contracts – Time Management Grid
- MEAC General Information Folders
- Acknowledgement of attendance (at the end)



Academic Services Staff



Associate Athletic Director, Academic Services
Mr. Eric D. Hart

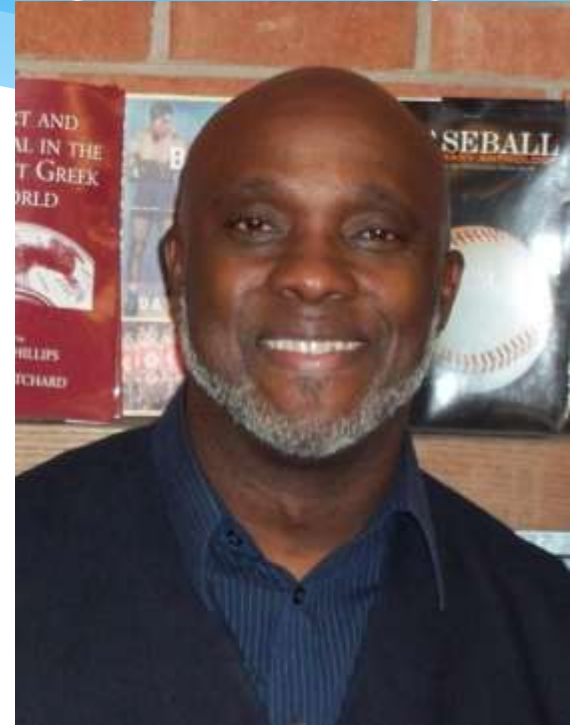


Assistant Director, Academic Services
Ms. Sandria D. Johnson

Academic Services Staff



Academic Counselor
Mr. Harry J. Sanchez



Academic Counselor
Mr. Patrick Casey

Academic Services Staff

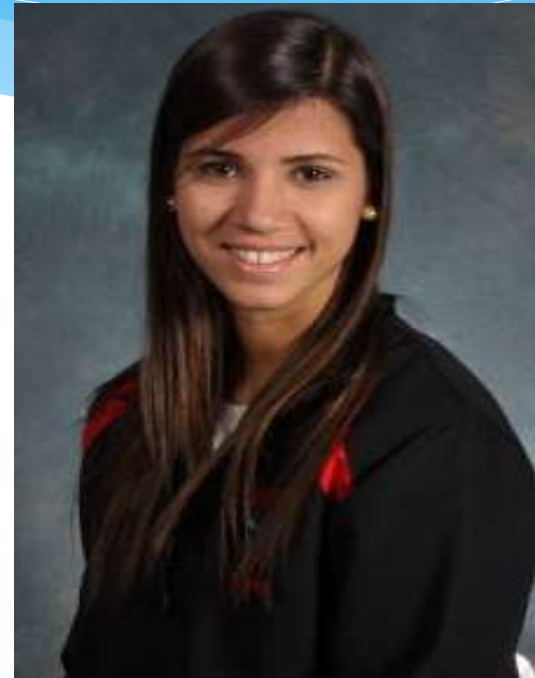


Academic Counselor
Mr. Randy Smith

Academic Service Staff



Graduate Assistant (MBA)
Mr. George Brown



Graduate Assistant (MBA)
Ms. Cristina Andrade

AGENDA

Topics to be Discussed

- * Connecting with your Athletic Academic Counselor
- * Tutors & Mentors
- * Office of Disability Services
- * Academic “TOOLS YOU CAN USE!”
- * “Top 5 things that delay graduation!”
- * “Academic Probation 101”
- * Office of Financial Aid & Satisfactory Academic Progress (S.A.P.)
- * NCAA Academic Progress Rates (Understanding how APR affects DSU Athletics!)
- * NCAA Continuing Eligibility (A guide to understanding YOUR athletic eligibility!)
- * Study Hall – “The who, what, when, where, and why conversation?”
- * Bookstore Policies and Procedures
- * Student-athlete handbook/planner & A.S.S.A. Website

IMPORTANT

Connecting with your Academic Counselor

Delaware State University values academic excellence as well as athletic achievements and insists individuals are students first and athletes second.

Academic Services for Student-Athletes help students prioritize academics by providing a comprehensive support system throughout their college career.

- ❑ We offer a number of services to help all our student athletes in their quest for academic success:
- ❑ Academic Monitoring
- ❑ NCAA Eligibility and Progress Toward Degree Information
- ❑ Study Hall
- ❑ Priority Registration – *“as long as you are registered as a student-athlete”*
- ❑ Progress Reports
- ❑ Academic Support Services (tutoring, SI, writing lab, ODS, PLATO web)
- ❑ Psychological Counseling referrals

IMPORTANT

Connecting with your Academic Counselor (Continue)

- ❑ The relationship you build with your academic counselor can be a rewarding experience. From the time you begin your academic career, we begin the process of building trust. You will, from time to time, provide us with academic information but also personal information regarding your individual circumstances. We believe the relationship we build with our student-athletes is essential to aiding in the transition from high school to college.
- ❑ We promote academic excellence and will engage in dialogue that will foster raising the bar for success. We expect honesty and respect when engaging in communication with our staff. In order to provide for a collegial exchange and in order to ensure proper academic assistance will be administered on our end, we ask that you adhere to the following policies and procedures:

IMPORTANT

Connecting with your Academic Counselor (Continue)

- ❑ Please do not drop or withdraw from classes without communicating first with your academic advisor, but most importantly with your academic counselor for your sport. Your eligibility hinges on you making the appropriate decisions pertaining registration and class attendance. Keep us in the loop before you make that decision.
- ❑ Make sure you receive or provide any necessary documents pertaining to your academic career. For example, if you take a course at another institution, make sure you not only provide us with a final transcript, but that you receive proper permission to take a course at another institution. Also make sure you bring updated “change major forms” – where applicable , advising forms, and any other forms of documentation that allow for your files to be up-to-date.
- ❑ Be on time for all scheduled appointments. If you cannot make an appointment, please let us know as soon as possible. Preferably with a 48 hour window of time.

IMPORTANT

Connecting with your Academic Counselor (Continue)

- ❑ Be clear and consistent with your academic goals and expectations. We ask that you clarify your purpose and begin thinking introspectively. Again, remember, **“we are not here to spoon feed you!”**
- ❑ Be honest and please respect the process of communicating your “successes” and your “failures”. Simply stated, if you are failing a class or not putting forth your best effort, let us know so that we can intervene as much as possible and in enough time to do something about it.
- ❑ Take ownership for your experience. Your collegiate experience is what you make of it. If you want to be here 8 to 10 semesters, you must do the little things to make that happen.

IMPORTANT

Tutors and Mentors

- ❑ As a freshman (or new transfer), your academic counselor will determine which classes you will need a tutor (most likely it may end up being all of your classes). Know your responsibilities when assigned a tutor

“To all tutees:

1. If you are unable to meet with your tutor; You must call them to cancel within 24 hours of the appointment.
2. Three missed appointments without calling results in discontinued services.
3. When meeting with your tutor, the tutee’s must bring all materials: i.e. books, notes from class, pen or pencil or any additional learning tools necessary to conduct business with your tutor.”

- Ms. Jackye Fountain (Tutor Coordinator)

IMPORTANT

Tutors and Mentors

- ❑ You and your academic counselor will determine if you can stop meeting with your tutor, but the tutor coordinator and tutor must be notified within 72 hours or three days of that decision.
- ❑ Treat your tutor or mentor with the same respect you would show to your professors, your coaches, or your academic counselor
- ❑ Tutors and mentors are not there to do your homework for you; come to the sessions prepared so that you know what types of questions to ask of your tutor. “If you haven’t prepared for the work, how do you expect them to know how to assist you?”



+



+



= “No spoon feeding!”

IMPORTANT

Tutors and Mentors

- ❑ Missing a tutoring or mentoring appointment will be treated just like missing study hall and that information will be provided to the coaching staff.
- ❑ Tutors and Mentors have been put in place to help you be successful in your classes.



SUCCESS

Office of Disability Services

Roberta Durrington – rdurrington@desu.edu (302) 857-7304

* *Educational Assessments Available to DSU Students*

- * “To determine a student’s academic strengths and challenges for academic support planning; offered by the Learning Specialist at DSU in conjunction with the Office of Disabilities Services.
- * Plato Software – online software engineered to provide assistance in a host of academic topics such as English Composition, reading comprehension, mathematics, PRAXIS testing, Biological and other natural sciences.

Office of Disability Services (Continue)

- * **Disability Services** (including short-term disabilities) – Must provide a copy of your most recent test (administered either through the high school or junior college) upon enrollment at Delaware State University.
 - * Accommodations may include, “extended time on tests; note-takers; ability to take test in a quiet environment on the 2nd floor of the Library; priority seating –depending on sight or hearing impairments” – For others, please consult with Roberta Durrington, Learning Specialist
- * **Probation Workshops/Learning Skills Services** - mandatory for student-athletes during the semester on probation. Purpose is to provide academic support services to manage the complexities of being a student-athlete.

Office of Disability Services (Continue)

* **Athletic Related Injuries or Medical Withdrawals**

- * “We hope that you never have to experience a significant, incapacitating injury while participating in your sport. However, we realize injuries and illnesses occur. If at any point you have to miss classes due to injuries or illnesses, YOU MUST contact us immediately, so that we may contact your professors [**and depending on the circumstances; the Office of Disability Services – to ensure that depending on your injury, accommodations are provided for you in a timely manner**]. If absolutely necessary, you may have to withdraw from DSU for the remainder of the term injured or ill.
- * It is your responsibility to go to class if you have been cleared by the medical staff to return (**even if you feel you need more time to recover from injury or illness**). Failure to attend classes and keep up with assignments may result in you performing poorly and may result in loss of scholarship(s), practice, and playing time.

Questions, Comments, or Concerns



Academics – “Tools you can use!”

Academic (undeclared or departmental) vs. Athletic Advisor

* Your Departmental Advisor...

- * Assists you with understanding the curriculum/major of your choosing
- * Helps you get registered for your classes (fall + spring + summer)
- * Signs off on documentation (change of major forms, drop/add slips, etc.)
- * Required to meet with you at least once during the fall and spring during priority advising and registration period
- * Has access to your registration pin number and can share this information with you to allow you to access the banner web registration system
- * Can speak with your instructors if you are having difficulty in your classes
- * Can help you officially withdraw from classes if necessary
- * Can make certain that credits taken at another institution will count toward your Delaware State University degree

Academics – “Tools you can use!”

* Your Athletic Counselor ...

- * Will assist you as you transition from high school to college (freshmen) and junior college or another university to DSU (transfers)
- * Will know how to interpret the curriculum sheets for each major at DSU and will factor in athletic responsibilities such as practice times, travel to contests, workload in and out of season; while collaborating with your departmental advisors
- * Establish and maintain working relationships with student-athletes and coaches and will become an advocate for most issues pertaining to the student-athlete experience
- * Provide information about campus deadlines that have an academic focus (e.g. “last day to satisfy an incomplete, last day to drop a class!”)
- * Will provide policies and procedures that will explain how SA’s will govern themselves as participants in collegiate athletics

Academics – “Tools you can use!”

- * **Academic Meetings with your Athletic Counselor**
 - * New to DSU – “Freshman/Transfer Meetings” – 2 weeks into semester with your Athletic Counselor
- * **Getting to know your professors**
- * **Incompletes** – incomplete coursework due six weeks after fall semester begins – **October 6th**
- * **Classroom Etiquette** – *See additional slides at the end of the presentation!*
 - * Show up for class on time and have the decency to stay until class is dismissed!
 - * Does where you sit in the classroom affect the type of grades you receive?
 - * Electronic devices – blackberry, iPhones, iPods (**don't use while in class**)
 - * Academic Preparedness – bringing textbooks, homework, writing utensils to class; having a legible copy of the syllabus; checking emails & blackboard once per day

Academics – “Tools you can use!”

- * **Grading System & Quality Points**

- * A = 4 quality points

- * B = 3 quality points

- * C = 2 quality points

- * D = 1 quality point

- * In order to calculate your grade point average, assume the following for a 15 credit load:

- * “If you earn an A, B, B, C, & D, you will multiply $3*4$, $3*3$, $3*3$, $3*2$ and $3*1$ or $12+9+9+6+3 = 39/15 = \underline{2.60}$ ”

Academics – “Tools you can use!”

- * **Grading System Best Practices** (when is a good time to use?)
 - * For figuring out academic standing after midterm exams
 - * When heading into final exams
 - * When applying for honor societies, scholarship, & grad. school programs
 - * When repeating courses – “how to determine the new GPA”
 - * When selecting majors that have minimum GPA entry requirements.

Academics – 5 Ways to Delay Graduation

Did you know if you do not earn enough credits by the spring of your senior year, you will not be able to participate in commencement ceremonies?

Here are five top reasons why students may not graduate on time.

- * **Dropping courses** – it is not mathematically possible to graduate in 8 semesters while only taking 12 credits per term. You will have to consider summer school and even then, you may have to pay out of pocket to attend summer school.
- * **Withdrawing from a class or withdrawal from the University**
- * **Repeating courses** - when you have to repeat a course where you may have earned a F or in a course where the major required a C or higher and you made a D; you can significantly impact your ability to graduate within a four to five year range; and more importantly, it can cost a lot of money to repeat a course.
- * **Incomplete coursework** (earning an incomplete during the previous semester, but not finishing the coursework before the I becomes a F.) Please remember you have 6 weeks to complete coursework not satisfied from the previous semester before that grade changes from I to F.
- * **Changing majors multiple times**

“Academic Probation 101”

- * Academic Probation is defined as...
 - * “A student whose grade point average is below **1.70** at the end of any semester shall be placed on academic probation for the succeeding semester unless the student’s cumulative grade point average is 2.00 or greater. **A student on probation is ineligible to hold elective positions or to represent the University in any capacity.**”
- * A student-athlete can be NCAA eligible to compete in his or her given sport, but due to the Institution’s rules governing academic probation, can be ineligible to compete.

Academic Probation 101

- * Probation – (Continued)
 - * Any student placed on probation will have their next semester schedule purged and will be required to attend a probation workshop during spring or fall orientation.
 - * Additionally, students will not be able to register for more than **13** hours; one of which must be [Academic Learning Strategies \(ALS\)](#) or [Staying on Course](#) (if ALS has already been taken).
 - * Let's discuss a few scenarios that may help clear up the probation conversation...

Academic Probation 101

- * **Scenario #1**

- * “Gary is a first semester freshman at DSU. He registered for 16 credits and at the end of the fall he earned a cumulative and term grade point average of 1.79. He also earned 10 credits.”
 - * Is he NCAA Eligible?
 - * Is he on Academic Probation?

Academic Probation 101

- * Scenario #1

- * **Answer** – “Yes to the first question and no to the second. Gary is NCAA eligible because he passed 10 credits. NCAA does not take GPA into account during the first semester of the freshman year. He is not on probation because his term and cumulative GPA is 1.79”

Academic Probation 101

- * Scenario #2

- * “Stephanie is a first semester student at DSU. She registered for 16 credits and at the end of the fall she earned a cumulative and term grade point average of 1.15. She also earned 5 credits.”

- * Is she NCAA Eligible?

- * Is she on Academic Probation?

Academic Probation 101

- * **Scenario #2**

- * **Answer** – “No to the first question and Yes to the second question. Stephanie is not eligible due to the NCAA 6-hour rule. She did not pass enough credits to be eligible for the spring portion of her sport (i.e. track and field, if that was her sport). She will be on academic probation considering she only earned a 1.15 grade point average. If she would have passed 6 hours she still would not have been able to compete due to the University’s restriction on competition while on probation.”

Academic Probation 101

- * Scenario #3

- * “Billy has just completed his freshman year. At the end of the spring semester he earned a 2.70 term grade point average. However, his cumulative grade point average is still 1.89. He earned 23 credits during the fall and spring semesters combined.”

- * Is he NCAA Eligible?

- * Is he on Academic Probation?

Academic Probation 101

- * **Scenario #3**

- * **Answer** – “No to both questions! This scenario is a bit tricky because Billy has a 1.89 cumulative grade point average and at the end of the freshman year, you must have a 1.80 cumulative average. While he does not have at least a 2.00 cumulative grade point average, he earned a term GPA of 2.70 so he will not be on probation. The trick in this scenario is that he needs to complete at least 1 credit to meet his NCAA 24 hour rule.”

Academic Probation 101

* Scenario #4

- * “Ella is a student at DSU who based on her fall grades had to be placed on academic probation. She registered for 13 credits during the spring semester and at the end of the spring she earned a term grade point average of 2.15. Her cumulative grade point average was 1.99. She earned 10 credits, but had a F in the other three credits.”
 - * Is she NCAA Eligible?
 - * Is she on Academic Probation?

Academic Probation 101

- * **Scenario #4**

- * **Answer** – “The first question depends on what year in school she is. If she is a freshman, sophomore, or junior, then yes, but if she is a senior or 5th year senior then no. She would need a 2.00 cumulative grade point average. She actually will be listed on Academic Suspension because she made a grade of “F” in one of her courses.

Satisfactory Academic Progress – Financial Aid (SAP)

Rules and Regulations

Did you know that you could be NCAA eligible yet ineligible to receive financial aid for failure to adhere to standards of satisfactory academic progress (SAP)?

Financial Aid Award Guide

- * (pages 13 – 16) make it abundantly clear that a student who receives federal aid must complete 80% of all hours attempted and maintain a minimum grade point average of 2.00.
- * Courses dropped during the “free” drop/add period do not count in the 80% calculation, but once drop add period is over all credits attempted, including classes that are dropped, withdrawn from, or courses in which a WF were received count toward the 80% Satisfactory Academic Progress.

Satisfactory Academic Progress – Financial Aid (SAP)

Rules and Regulations
(Continued)

- * Satisfactory Academic Progress:
- * Example of whether or not a student is meeting SAP...

“Stacie is registered for 17 credit hours during the fall semester. She earns a 2.4 and successfully completes 14 credits. She, unfortunately had to withdraw from Intro to Art (3 credits).”

Did Stacie earn enough credits to meet satisfactory academic progress?

- * Answer – “Yes, while Stacie had to withdraw from her Introduction to Art class, she earned 14 credit hours. In order to calculate SAP ($17 \times .80 = 13.6$). By rule, round each credit to the next decimal = 14. She met her SAP.”

Questions, Comments, or Concerns



Academic Progress Rate (APR)

System of academic reform designed to measure academic performance of teams from term to term

- * Only scholarship student-athlete data measured on the APR report.
- * Measures eligibility and retention from ending of fall semester and ending of spring semester (including summer school where necessary). APR asks the question, “*Was a student-athlete eligible to compete and did the student-athlete come back to your school?*”

Academic Progress Rate (APR)

- * Eligibility – 1E point earned during fall semester/1E point earned during the spring semester
- * Retention – 1R point earned during the fall semester/1R point earned during the spring semester
- * To determine APR, take the total number of scholarship student-athletes on a given roster and factor all the points that team could have earned during that academic year – (Example, “if the Bowling team has 20 female, student-athletes on their roster, but only 17 receive scholarships, take the maximum number of points that can be earned $17 * 4 = 68$ and divide by total number of points actually earned that season.”)
 - * “Let’s say one student transferred to another institution, but was eligible when she left after the spring and the rest of the team were eligible and came back to DSU in the fall of the new academic year; the team’s single year APR initially would be = $67/68$ or 985 ”

Academic Progress Rate (APR)

- * NCAA deems 925 to be the cut-off score
- * Contemporaneous vs. Historical Penalty Phases
 - * Contemporaneous penalties look at scores between 900 – 924
 - * Historical penalties look at teams with scores below 900
- * Ban on Institution's ability to give Athletics Aid
- * Ban on Post-season participation
- * Public Reprimand
- * Top 10% recognition
- * Transfer Exception (Four Pronged Test)
- * [APR 2009 - 2010 \(Delaware State University\)](#)

Academic Progress Rate (APR)

What are some **APR Best Practices** for Delaware State University?

1. **Go to Class** – consistently going to class (on time - everyday) increases the likelihood your professors are willing to assist you at the end of a semester, as you stand to earn full credit for participation and attendance points.
2. **Register for more than the minimum of 12 to 13 credits** - by registering for 15 – 17 credits you increase the likelihood of not only being eligible at the end of the semester or academic year, but you increase the likelihood of graduating within eight to 10 semesters.
3. **Passing all credits for which you are registered** - now that you have decided to register for additional credits, you must also pass those credits. Be knowledgeable about the majors that require you to earn a C or higher in either all courses in the curriculum or major related courses only. Do not assume that a grade of “D” is passing in all scenarios. Set your sights for C and higher for all classes for which you register.

Academic Progress Rate (APR) (Continue)

4. **Utilize your campus resources (ask for assistance)** – you represent a group of competitive young men and women, however, there is nothing wrong in asking for help when you need it. Be responsible for asking for help before you get into academic jeopardy and **not after the semester is over!**
5. **Talk about APR with your coach/teammates/athletic advisor-** Know how APR affects your team and when you see your teammates making poor academic choices, say something before it's too late!

NCAA Continuing Eligibility Topics





- * Continuing Eligibility
 - * 6-Hour Rule
 - * 12-Hour Rule
 - * 24-Hour Rule

- * Satisfactory Progress Towards Degree
 - * Degree Completion
 - * 40/60/80 Percent of Degree Rule

 - * Grade Point Average
 - * 90/95/100 Percent of Minimum GPA Rule

Beginning Sophomore Year

(after 2 semesters)

-  Must have earned at least 6 credits each semester.
-  Must have earned at least 24 credit hours during previous year.
-  At least 18 hrs earned during the regular academic year. (fall & spring)
-  90% of minimum GPA for graduation at end of year. (1.80)

☺ ☺ ***Must be in Good Academic Standing***

Beginning Junior Year (after 4 semesters)

- 🎮 Must have earned at least 6 credits each semester.
 - 🎮 At least 18 hrs earned during the regular academic year. (fall & spring)
 - 🎮 Must have declared a major.
 - 🎮 95% of minimum GPA for graduation each semester. (1.90)
 - 🎮 40% of degree requirements must be completed. (48 hrs)
- ☺️ 🎮 ***All hours used for meeting the Progress Towards Degree must apply to your designated degree program.***

Beginning Senior Year (after 6 semesters)

- Must have earned at least 6 credit hours each semester.
 - At least 18 hrs earned during the regular academic year. (fall & spring)
 - Must have a declared major.
 - 100% of minimum GPA for graduation each semester. (2.00)
 - 60% of degree requirements must be completed. (72 hrs)
 - Graduation Audits must be completed by end of Junior year.**
- ☺ ☹ ***All hours used for meeting the Progress Towards Degree must apply to your designated degree program.***

Beginning 5th Year (after 8 semesters)

- Must have earned at least 6 credit hours each semester.
 - At least 18 earned during the regular academic year. (fall & spring)
 - MUST have a major.
 - 100% of minimum GPA for graduation each semester. (2.00)
 - 80% of degree requirements must be completed. (96 hrs)
- ☺ ☹ **All hours used for meeting the Progress Towards Degree must apply to your designated degree program.**

Questions, Comments, or Concerns



IMPORTANT

Study Hall Hours of Operation

- * Study Hall required hours are driven by academic performance or lack thereof. Coaches can mandate a set number of hours a student-athlete must be in study hall. Additionally, freshman and new transfer student-athlete required hours may be different than continuing student-athletes who are required to participate in study hall.
- * The Library will be open for study hall during the following times:
 - Sundays 2:00 p.m. – 10:00 p.m.
 - Mondays – Thursdays 6:00 p.m. – 10:00 p.m.
 - Fridays 8:30 a.m. – 3:30 p.m.
 - Saturdays CLOSED



IMPORTANT

Things that are unacceptable in Study Hall

- * Arriving late for your assigned study hall (if an arrival time is pre-determined by your academic counselor or coach).
- * Arriving to study hall without books, notebooks, or other materials needed to be prepared for your classes.
- * Loud talking, yelling, or **PROFANITY** will not be tolerated in the designated area on the 2nd Floor of the William C. Jason Library.
- * **NO** music of any type will be permitted on the 2nd Floor of the Library without appropriate usage of headphones.



IMPORTANT



Things that are unacceptable in Study Hall

- * Usage of cell phones, this includes incoming and outgoing calls and text messages are strictly prohibited during study hall.
- * No hats, dew rags, stocking caps, etc... will be worn on the second floor of the library.
- * No missed tutor, mentor, advisor or counseling appointments; if you have an appointment, you **MUST** attend.
- * No sleeping at any time!



IMPORTANT

DSU Academic Services Computer Use Policy

- * Absolutely **NO food, drink, or tobacco** products are allowed in the computer lab area at any times. Exceptions on a case by case basis will be made for H2O, Gatorade, and other nutrient-based shakes containing a spill-proof lid.
- * No horseplay (fighting) will be tolerated. The Lab is a quiet work area; noise should be kept at a minimum. Be considerate of your fellow student-athletes. **This is your first and only warning!**
- * Non-academic services such as instant messenger chats, browsing world wide web, Rivals.com, *checking out your stats on DSU's website*, etc shall be conducted during “non-required” study time. Time spent on these services **does not** fulfill study hall requirements. **FACEBOOK, YOU TUBE, and TWITTER** have been removed from the computers on the 2nd Floor of the library!
- * A DSU account is provided to every student. All pertinent academic information from professors, ENews, school updates, financial aid, student accounts, and your academic counselor is sent to your DESU email. Please make sure that you are using your school account. If you need help establishing your email account, please contact the help desk (302) 857-7028 or go to room 313 Bank of America Building with your student identification card.



IMPORTANT

Book Purchasing Process

The following “six-steps” pertain to the process that student-athletes have to follow in order to receive books. This process governs all activity for which student-athletes who are on “book scholarship must adhere to:

* Step One

Student-athlete will go online and request a voucher for books

1. Log onto www.desu.edu
2. Click on “student life”, then go to “student services”
3. Click on book voucher
4. Click on request
5. Fill in the information requested

IMPORTANT

Book Purchasing Process

- * **Step Two**
Student Accounts will approve and add a book voucher to your account.
- * **Step Three**
Student-athlete will check status of ID card on-line before going to purchase books.
- * **Step Four**
Student-athlete will go to bookstore with a copy of their class schedule and an Academic Counselor will be there while they purchase books needed for class.
- * **Step Five**
Academic Counselor will retain the receipt for the books, record the amount spent on a spreadsheet that contains student-athlete's name, D number, and amount of scholarship.

IMPORTANT

Book Purchasing Process

* Step Six

If book is not in stock, the student-athlete will pay for the book, get a duplicate receipt, and the bookstore will contact you once the books arrives.



WARNING: Please make sure you understand the nature of the book scholarship. You are **NOT** to purchase books for teammates not on book scholarship; friends in your classes, girlfriends, boyfriends, or significant others! Illegal purchases made by you could suspend your privileges in receiving book scholarship, could cost your eligibility, and could cost your team post-season competition privileges if you are found in violation. You may even have to pay back monies to the University's Athletics Department.

**“THIS IS A NCAA RULE, SO DO NOT BREAK IT,
IT’S SIMPLE NOT WORTH IT”!**

Policies and Procedures

- * **[“ASSA Policy & Procedures Manual”](#)** – This manual was created to provide you with rules and regulations that govern your participation as a Division I student-athlete (from an academic capacity). Failure to comply with the information outlined within this manual may revoke your participation as a DSU student-athlete and in some cases, may cause for you to be dismissed from the University as a whole. Please take time to review items within this manual carefully!
- * **[Academic Services for Student-Athletes website](#)** – We are excited about providing you with a tool to access information over the world wide web. This site will provide useful information as you navigate through the collegiate experience. Most of the information on the ASSA website pertains to your DSU experience, while some information (career development link) will prepare you for life after college. Feel free to provide feedback to our A.S.S.A. **[webmaster](#)**.

Questions, Comments, or Concerns



Additional Slides... ”For your review!!!”

- * CLASS ROOM ETIQUETTE
- * CLASS ATTENDANCE
 - * VALID EXCUSES VS. INVALID EXCUSES
- * ACADEMIC HONESTY POLICY
 - * ACADEMIC DISHONESTY
 - * PLAGIARISM
- * DSU AWARDS & RECOGNITION
- * Reasons Why Student-Athletes are not Successful After the First Year at DSU

Class Room Etiquette

Before entering the classroom make sure you do the following:

- * Take off your hat (includes skullies, toboggans, etc.).
- * Take your head phones off and turn off your CD player, I-Pod, and/or cell phone (includes game boys, side-kicks, and any other distracting electronic devices)
- * “Pull your pants up!” – Pet peeve of Mr. Hart 😊

Address your professor as either “Professor _____ or Dr. _____”

Class Room Etiquette

* Classroom arrival and departure:

- ❖ Try to arrive a minimum of five minutes before your classes start
- ❖ Use the restroom, if at all possible, before entering class
- ❖ DO NOT leave class early, {class checkers will monitor attendance at random times}
- ❖ **Leaving early will count just as being absent** (unless you have a valid excuse)



Class Room Etiquette

- ▶ Be on Time!!!!

- ▶ When you first walk into the classroom:
 1. Sit in the first 3 rows (DO NOT sit in the back of the classroom)
 2. Spread out across the room – try not to congregate and draw attention to yourselves
 3. Pull out your notebooks and pen/pencil to be prepared to take notes
 4. Be engaged and participate in discussions – **class participation points are essential when evaluating final averages**

Class Room Etiquette

- * The following behaviors are **unacceptable** in the classroom while the professor is teaching:
 - ✓ Sleeping
 - ✓ Reading “The Hornet” or other types of print media
 - ✓ Working on other homework/assignments
 - ✓ Working on your playbook or game day schemes
 - ✓ Usage of electronic devices mentioned earlier
 - ✓ Checking Face book & Twitter –if you bring your laptop or cell phone to class



Class Attendance

MANDATORY!!!

What if the professor does not have an attendance policy?
Attendance is still **MANDATORY!**

“Do you still practice even if it’s a bye week?”

When in doubt, ask yourself, **“Where is my HORNET PRIDE?”**

What is a “Valid Excuse?”

* Some **legitimate** excuses are:

“I had a doctor’s appointment and I spoke with the professor before class to let him or her know”

“I spoke with the professor before class and gave him or her my athletic travel letter”

“I have been called home due to a death in my immediate family. Upon return I will provide documentation, if necessary.”

What is an “Invalid Excuse?”

* Examples :

“The professor was showing a movie and I didn’t think it was necessary to attend.”

“The last part of class was a review and it was optional”

“I was falling asleep”

“My stomach was messed up!”

“We just took a test and there’s not much going on right now”

“I have a test in the next period”

“My trainer wants me to come by and get treatment during this time”

“My Coach wanted to see me”

What is an “Invalid Excuse?”

“We got out of workouts late.”

“I went to my room after study hall/tutoring and fell asleep.”

“The professor doesn’t care if we miss class since there is no attendance policy.”

“My alarm didn’t go off this morning.”

“I went out last night and got messed up. I was too sick to go to class.”

“It was raining outside.”

“I already have an A at midterm so I can just get by until the end of the semester”

IMPORTANT

Academic Honesty



- * “**Academic Honesty**” means performing all academic work without plagiarism, cheating, lying, tampering, stealing, receiving unauthorized or illegitimate assistance from any other person, or using any source of information that is not common knowledge.”
- * “**Academic Dishonesty**” means knowingly performing, attempting to perform, or assisting any other person in performing any academic work that does not meet this standard of academic honesty.
- * “**Knowingly**” does not mean that the student must have known that the particular act was a violation of the University’s academic honesty policy. A student does not have to intend to violate the honesty policy to be found in violation. For example, plagiarism, intended or unintended, is a violation of this policy.

IMPORTANT

Academic Honesty

- * Academic honesty is defined broadly and simply as the performance of all academic work without cheating, lying, stealing, or receiving assistance from any other person or using any source of information not appropriately authorized or attributed.
- * Academic honesty is vital to the very fabric and integrity of the University

IMPORTANT

Academic Honesty

- * The **goals** of the academic honesty policy are to:
 1. Foster a culture of academic honesty in the University community.
 2. Maintain the integrity and academic reputation of the University.
 3. Process fairly and consistently matters related to academic dishonesty.

IMPORTANT

Examples of Academic Dishonesty

- * **Plagiarism** – Submission for academic advancement the words, ideas, opinions or theories of another that are not common knowledge, without appropriate attribution to that other person. Plagiarism includes, but is not limited to, the following acts when performed without appropriate attribution:
 - Directly quoting all or part of another person's written or spoken words without quotation marks, as appropriate to the discipline
 - Paraphrasing all or part of another person's written or spoken words without notes or documentation within the body of the work;
 - Presenting an idea, theory, or formula originated by another person as the original work of the person submitting the work;
 - Repeating information, such as statistics or demographics, which is not common knowledge and which was originally compiled by another person;
 - Purchasing (or receiving in any other manner) a term paper or other assignment that is the work of another person and submitting that term paper or other assignment as the student's own work.

IMPORTANT

Examples of Academic Dishonesty

- * **Unauthorized assistance** – giving or receiving assistance in connection with any examination or other academic work that has not been authorized by a faculty member. During examinations, quizzes, lab work, and similar activity, students are to assume that any assistance (such as books, notes, calculators, and conversations with others) is unauthorized unless it has been specifically authorized by a faculty member. Examples of prohibited behavior include, but are not limited to, the following when not authorized:

IMPORTANT

Examples of Academic Dishonesty

- Copying, or allowing another to copy, answers to an examination;
- Transmitting or receiving during an examination, information that is within the scope of material to be covered by that examination (including transmission orally, in writing, by sign, electronic signal, or other manner);
- Giving or receiving answers to an examination scheduled for a later time;
- Completing for another, or allowing another to complete for you, all or part of an assignment (Such as a paper, exercise, homework assignment, presentation, report, computer application, laboratory experiment, or computation);
- Submitting a group assignment, or allowing that assignment to be submitted, representing that the project is the work of all of the members of the group when less than all of the group members assisted substantially in its preparation;
- Unauthorized use of a programmable calculator or other electronic device.

IMPORTANT

Examples of Academic Dishonesty

- * Submitting for academic advancement an item of academic work that has previously been submitted (even when submitted previously by that student) for academic advancement, unless done pursuant to authorization from the Faculty Member supervising that work or containing fair attribution to the original work.
- * Altering grade, lab, or attendance records. This includes, for example the forgery of University forms for registration in or withdrawal from a course. This also includes signing a teammate as present for a class for which they are not in attendance.

IMPORTANT

Reasons why student have **NOT** been successful at DSU

- * Too much partying!
- * Not taking advantage of the resources available to you
- * Poor class attendance
- * Not studying outside of study hall
- * Failure to address poor study habits learned while in high school
- * Lack of focus, organization, discipline, and maturity
- * Poor attitude towards being in college

IMPORTANT

Reasons why student have NOT been successful at DSU

- * Relationships developing and ending prematurely
- * Drugs/Alcohol use or abuse
- * Homesickness
- * Getting caught cheating
- * Failure to turn in assignments on time or at all
- * Too much PLAYSTATION 2; X-BOX; You Tube; Facebook, Twitter

IMPORTANT

Academic Awards & Recognition

* **National and Regional Awards**

The institution regularly participates in nominating deserving student-athletes for Conference, Regional, and National Academic Recognition. The Athletic Media Relations office and the Academic Services staff work closely with the coaches to bring these honors to our student-athletes.

* **Scholar Athlete Award**

Presented annually to a male and female student-athlete; each sport has an individual nominated by the Head Coach. After consideration of all credentials, the Faculty Athletics Committee selects the male and female recipients of the Scholar-Athlete of the Year award. Each recipient receives special recognition at the University Honors Day program and a plaque recognizing his/her accomplishments will be placed on permanent display in the appropriate area.

* **Academic Hornet Award**

Student-athletes named to the President's or Dean's List are recognized as Academic Hornets for that team. During an appropriate athletics event, they will receive a certificate from the Athletics Department. Dean's List is 12 credits or more and a 3.25 grade point average for the term. President's List is 12 credits or more and a 4.00 grade point average for the term.

IMPORTANT

Academic Awards & Recognition

- * **Hornet Honor Roll**

A student-athlete earning a grade point average of 3.0 or higher for 12 or more degree applicable hours will be named to the **Athletics 3.0 Club** for that semester. The club is recognized each semester during an appropriate athletics event and each deserving member receives a certificate from the Athletic Department.

- * **Graduating Senior Academic Award**

Graduating senior student-athletes will receive recognition at the Athletic Director's Graduation Breakfast. **Academic Medallions** are presented to student-athletes who have exhausted their 4th season of athletics eligibility and are scheduled to graduate by the end of the summer of the year they are eligible to graduate.

For More Information

- * Eric Hart ehart@desu.edu (302) 857-7542
- * Sandria Johnson sjohnson@desu.edu (302)- 857-6038
- * Harry J. Sanchez hsanchez@desu.edu (302) 857-7974
- * Patrick Casey pcasey@desu.edu (302-857-7079
- * Randy Smith rsmith@desu.edu (302) 857-7415

Certification of Attendance

- * You will be receiving a form to sign shortly. This form confirms that you are a student-athlete for the 2012 – 2013 academic year and as a result you were required to attend the academic compliance meeting.
- * This form also reminds you that by signing you assume full (100%) responsibility for your actions and how your actions may affect your academic progress toward your degree and also your participation as a DSU student-athlete.
- * A copy of your signed form will be housed in your file on the 2nd Floor of the library

Conclusion

- * We thank you for “hanging in there”. This was a lot of information thrown at you at once, but know that the support system that is in place is set up to help you transition from high school to college or from your two-year institution to this 4-year experience.
- * **Rule of thumb:** “if you don’t know, ask one of us before you do something you will regret!”

