

Making Our Mark on the World

Destination
DELAWARE STATE UNIVERSITY
---Your Passport To Safety ---



Annual Campus

SECURITY REPORT

SECURITY REPORT

"2010"

DSU DEPARTMENT OF PUBLIC SAFETY

MAIN CAMPUS
Dover, Delaware

Mission Statement and Values

The Delaware State University Department of Public Safety is committed to providing the highest quality of service to our citizens. Acting in partnership with the community, we will be proactive and provide a responsive and flexible approach to quality-of-life issues.

Integrity: We strive to uphold the University's trust, by being honest, competent and consistent in our beliefs and actions. We will hold ourselves accountable to the highest standards of moral and ethical conduct.

Service: We will dedicate ourselves to improve the quality of life in our campus community by providing a safe environment for all. We are committed to protecting life, liberty and property, reducing fear and developing partnerships with campus organizations to prevent crime and promote awareness.

Respect: We will consistently treat all people in this community with dignity and compassion and without prejudice. We will protect the constitutional and civil rights through impartial enforcement of the law.

Vision Statement

Delaware State University Department of Public Safety vision is... "to support the administrative and financial performance of the University and provide a safe and healthy physical plant for students, faculty, staff and the public." The Department's efforts include preventive measures through education and enforcement, which promote awareness and individual responsibility in an effort to prevent criminal and safety mishaps.

Introduction

Nationwide, campus security and safety are important goals for law enforcement professionals to maintain a safe educational environment in which to learn and keep students, parents and employees well informed about campus security. These goals were created by The Student Right to Know and Campus Security Act of 1990; recently renamed The Jeanne Clery Disclosure of Campus Security Policy and Campus Crime Statistics Act, or Clery Act, which was enacted by Congress and signed into federal law in November 1990.

In compliance with the Clery Act, reports from the University community and local law enforcement agencies are compiled and published annually by the University's Department of Public Safety. As law enforcement professionals, it is our responsibility to provide a comprehensive, step-by-step readable report explaining the requirements of the Clery Act and what the act requires the educational institution to do.

This report explains public safety and security policies in effect at Delaware State University, located in Dover, DE. This report summarizes crime reporting

procedures, crime prevention programs, and other services available to the campus community. Crime statistics for the 2007, 2008 and 2009 calendar years are provided as information regarding arrest made by certain criminal offenses during these time periods. It should be noted that the crime statistics included in this publication are organized by locations that are identified as either owned or leased property belonging to Delaware State University.

Table of Contents

Mission/Vision	2
Introduction	2-3
Table of Contents.	4-5
Message from Chief	6
Delaware State University Department of Public Safety Directory	7-8
Part I: The Delaware State University Department of Public Safety (DSUPS)	10-11
Frequently Asked Questions about The Department of Public Safety	12-17
Reporting Criminal Activity	17
Reporting Crime and Emergencies	17-18
Access to Campus Facilities and Resident Halls	18
Security Consideration in Maintenance of Campus Facilities	18-19
Shuttle Transportation Services.	19
Emergency Phones.	19
Crime Prevention and Awareness Programs.	19-20
Fire Prevention	20
Counseling Department.	20-21
Safety Tips and Programs	21-23
Part II: Annual Campus Safety and Security Report.	24-42
Timely Warning Notices	24
Daily Crime Log.	24
Daily Fire Log.	25
Alcohol and Drug Policy.	25
Sexual Harassment Policy	25-27
Sexual Assault Policy	27-28
Reporting Sexual Assaults	28-29
Reducing the Risk of Sexual Assaults.	29-30
Sex Offender Registration Policy.	30-31

Missing Person Policy.....	31
Crisis and Emergency Services..	31
Crime Statistics	32
Definitions of Reportable Crimes	32-34
Criminal Homicide	32
Forcible and Non-Forcible Sex Offenses ..	32-33
Robbery.	33
Aggravated Assault.	33
Burglary	33
Motor Vehicle Theft.	33
Arson	33
Hate Crimes.....	33
Larceny/Theft	33
Simple Assault	34
Intimidation/Menacing	34
Vandalism/Criminal Mischief	34
Other Offenses.	34
Crime Offenses and Crime Statistics	35-37
DSU Main Campus	35
DSU Wilmington Campus	36
DSU Owen’s Campus	37
Arrests and Judicial Referrals..	38–40
DSU Main Campus	38
DSU Wilmington Campus	39
DSU Owen’s Campus	40
2006 through 2008 Clery Statistics Charts	41
Campus Map.....	42

We are committed to serve and protect



The Delaware State University Department of Public Safety is responsible for the safety and security of all members of the University community. We solicit your support and active participation in our safety and campus security efforts. We further challenge you as members of this community to act in a security conscious manner and to avoid actions which jeopardize your safety and the safety of others. The information in this booklet is designed to inform you of the police and security support services and programs at Delaware State University. These services have been developed to create an environment supportive of education, research and extracurricular activities. We encourage you to follow the advice and suggestions in this booklet with the hope that it will greatly reduce the risk of victimization.

Preventing and reducing crime effectively in our community means that we need your help, support and cooperation.

We care—Together we can maintain a safe and secure community.

James T. Overton

Chief of Police

Founded in 1891, Delaware State University (DSU) is a quasi-urban institution in Dover, DE, and founded in 1891. It is an open campus community during the day and restricted to students, faculty, staff and authorized guests during the night hours. Although there are many pleasures associated with an open yet restricted campus, we share problems with our surrounding community. Similar universities that try to emphasize the importance of correct social and interpersonal conduct in promoting a learning experience use campus police departments to establish a safe and healthy environment. Approximately 400 acres and numerous modern buildings constitute the Delaware State University campus. Department of Public Safety has the primary responsibility for security on campus. The perception of safety is important, but the ability to make students safe is greater. Our students will receive a professional customer service response. Additionally, having a professional police department allows a true partnership and respect between DSU and other law enforcement agencies

Delaware State University Department of Public Safety Directory

James T. Overton

Associate Vice President
for Public
Safety/Chief of Police
joverton@desu.edu
Telephone:302.857.7472
Fax: 302.857.7924

Dominick Campalone

University Police
Sergeant
dcampalone@desu.edu
Telephone:302.857.7338
Fax: 302.857.7090

Michael Carlton

University Police
Patrolman
mcarlton@desu.edu
Telephone:302.857.6290
Fax: 302.857.7090

Brian O' Hern

University Police
Officer
bohern@desu.edu
Telephone:302.857.7158
Fax: 302.857.7090

Nigel Golding

University Police
Officer
ngolding@desu.edu
Telephone:302.857.6290
Fax: 302.857.7090

Alton Hill

University Security
Corporal
ahill@desu.edu
Telephone:302.857.7357
Fax: 302.857.7090

Duvanel Louis

University Security
Officer
dlouis@desu.edu
Telephone:302.857.6290
Fax: 302.857.7090

Belinda Baker

Deputy Chief
University Police Major
Administrative
Commander
brbaker@desu.edu
Telephone:302.857.7479
Fax: 302.857.7916

Pledge Sanders

University Police
Sergeant
psanders@desu.edu
Telephone:302.857.7338
Fax: 302.857.7090

Gregory Elliott

University Police
Corporal
gelliott@desu.edu
Telephone:302.857.7342
Fax: 302.857.7090

Enya Spence

University Police
Officer
espenca@desu.edu
Telephone:302.857.6290
Fax: 302.857.7090

Justin Buchwald

University Police
Officer
jbuchwald@desu.edu
Telephone:302.857.6290
Fax: 302.857.7090

Sakpeh Morris

University Security
Corporal
smorris@desu.edu
Telephone:302.857.7334
Fax: 302.857.7090

Kevin Burns

University Security
Officer
kburns@desu.edu
Telephone:302.857.6290
Fax: 302.857.7090

Donald Baynard

University Police
Lieutenant
Operations Commander
dbaynard@desu.edu
Telephone:
302.857.7578
Fax: 302.857.7478

William Yossick

University Police
Detective Corporal
wyossick@desu.edu
Telephone:302.857.7995
Fax: 302.857.7090

Heather Golding

University Police
Officer
hcooke@desu.edu
Telephone:302.857.7553
Fax: 302.857.7090

Joshwyn Abrams

University Police
Officer
jabrams@desu.edu
Telephone:302.857.6290
Fax: 302.857.7090

Theodore Johnson

University Police
Officer
tjohnson@desu.edu
Telephone:302.857.7993
Fax: 302.857.7090

Bridestone Harris

University Security
Officer
bkharris@desu.edu
Telephone:302.857.7343
Fax: 302.857.7090

William Cain

University Security
Officer
wcain@desu.edu
Telephone:302.857.6290
Fax: 302.857.7090

Bruce M. Thomas

University Security
Lieutenant
Special Events
Coordinator
bmthomas@desu.edu
Telephone:302.857.7477
Fax: 302.857.7090

Matthew Chaffee

University Police
Corporal
mchaffee@desu.edu
Telephone:302.857.7108
Fax: 302.857.7090

Leonard Masseus

University Police
Officer
lmasseus@desu.edu
Telephone:302.857.6290
Fax: 302.857.7090

Joi Davis

University Police
Officer
jdavis@desu.edu
Telephone:302.857.6290
Fax: 302.857.7090

Russell L. Smith

University Security
Sergeant
rlsmith@desu.edu
Telephone:302.857.7315
Fax: 302.857.7090

Henry Jones

University Security
Officer
hjones@desu.edu
Telephone:302.857.7157
Fax: 302.857.7090

James Paige
Identification Center
Manager
jpaige@desu.edu
Telephone:302.857.7576
Fax: 302.857.7090

Esther Guzman
University Police
Dispatcher
eguzman@desu.edu
Telephone:302.857.6290
Fax: 302.857.7090

Chandra Roberson
Administrative
Secretary
croberson@desu.edu
Telephone:302.857.6309
Fax: 302.857. 7924

Tiameca Phillips
University Police
Dispatch Manager
tidavis@desu.edu
Telephone:302.857.7091
Fax: 302.857.7090

Monique McNeil
University Police
Dispatcher
mmcneil@desu.edu
Telephone:302.857.6290
Fax: 302.857.7090

Shumeissa Faqeryar
Information Technology
Specialist
ssammander@desu.edu
Telephone:302.857.7476
Fax: 302.857.7090

Shenequa Harris
University Police
Dispatcher
stharris@desu.edu
Telephone:302.857.6290
Fax: 302.857.7090

Dominique Penick
University Police
Dispatcher
tmwilliams@desu.edu
Telephone:302.857.6290
Fax: 302.857.7090

Angela Cherry
University Police
Dispatcher
acherry@desu.edu
Telephone:302.857.6290
Fax: 302.857.7090

Andre Baker
University Police
Dispatcher
abaker@desu.edu
Telephone:302.857.6290
Fax: 302.857.7090

Living and learning in a safe environment

On July 1, 2000, legislation went into effect giving Delaware State University the authority to establish the Department of Public Safety. Once established, Delaware State University Department of Public Safety became the “primary campus law-enforcement servicing agency.” This enables our officers to receive professional police training, national agency accreditation, access to professional research, membership to professional associations, grants and the recognition of professionalism. The Department's security policies and procedures will derive their authority from their appointment by the University and their compliance with the appropriate legislative codes administered by the State of Delaware. Specific statutes govern enforcement regulations concerning consumption and use of alcoholic beverages, substance abuse, possession of firearms and the registration and monitoring of social events.

As a community-oriented policing organization, we are committed to a partnership with the community in which we pledge to provide high-quality community policing programs and services. Our mission is to work with all communities to preserve life, maintain human rights, protect property and ultimately enhance the quality of life on campus and in the community.

The Department of Public Safety is centrally located on campus in the Public Safety Building, which is directly behind the Price Building. Police, security officers or a supervisor are on duty 24 hours, 365 days a year.

All incoming reports of criminal activity involving Delaware State University students are investigated. Criminal and administrative prosecutions for offenses taking place on campus and off campus within our concurrent jurisdiction area are initiated by the University Department of Public Safety with appropriate follow-up.

The Department of Public Safety provides basic police services to the campus community. The Department's main objective is to provide a safe environment for students, staff, faculty and visitors. Delaware State University police officers perform a variety of law enforcement tasks, which include investigation of criminal activity, apprehension of criminals, traffic enforcement, emergency response and special security assignments

The DSU Police Department currently employs 34 sworn and non-sworn members. This number includes 17 sworn accredited police officers to include the chief of police, 9 non-sworn security officers, 7 police dispatchers and 3 operational and administrative staff.

The Department of Public Safety reports to the Vice President of Student Affairs, 1200 North DuPont Highway, Dover, DE 19904, telephone: 302.857.6200.

Delaware State University Department of Public Safety

1200 North DuPont Highway
Dover, DE 19904

Telephone: 302.857.6290

24-Hour Dispatch: 302.857.6290

On-Campus Emergency: 4444

Tip Line: 302.857.7918

City of Wilmington Police Department

300 North Walnut Street
Wilmington, DE 19801

Telephone: 302.654.5151

(Emergency) 911

The City of Wilmington Police Department is the primary law enforcement agency to investigate all crimes and incidents at the Wilmington Campus, located at 621 N Market Street, Wilmington, DE 19801.

Delaware State Police—Troop 4

23652 Shortley Road
Georgetown, DE 19947

Telephone: 302.654.5850

(Emergency) 911

The Delaware State Police: Troop 4 is the primary law enforcement agency to investigate all crimes and incidents at the Owen's Campus, located at 21179 Seashore Hwy., Georgetown, DE 19947.

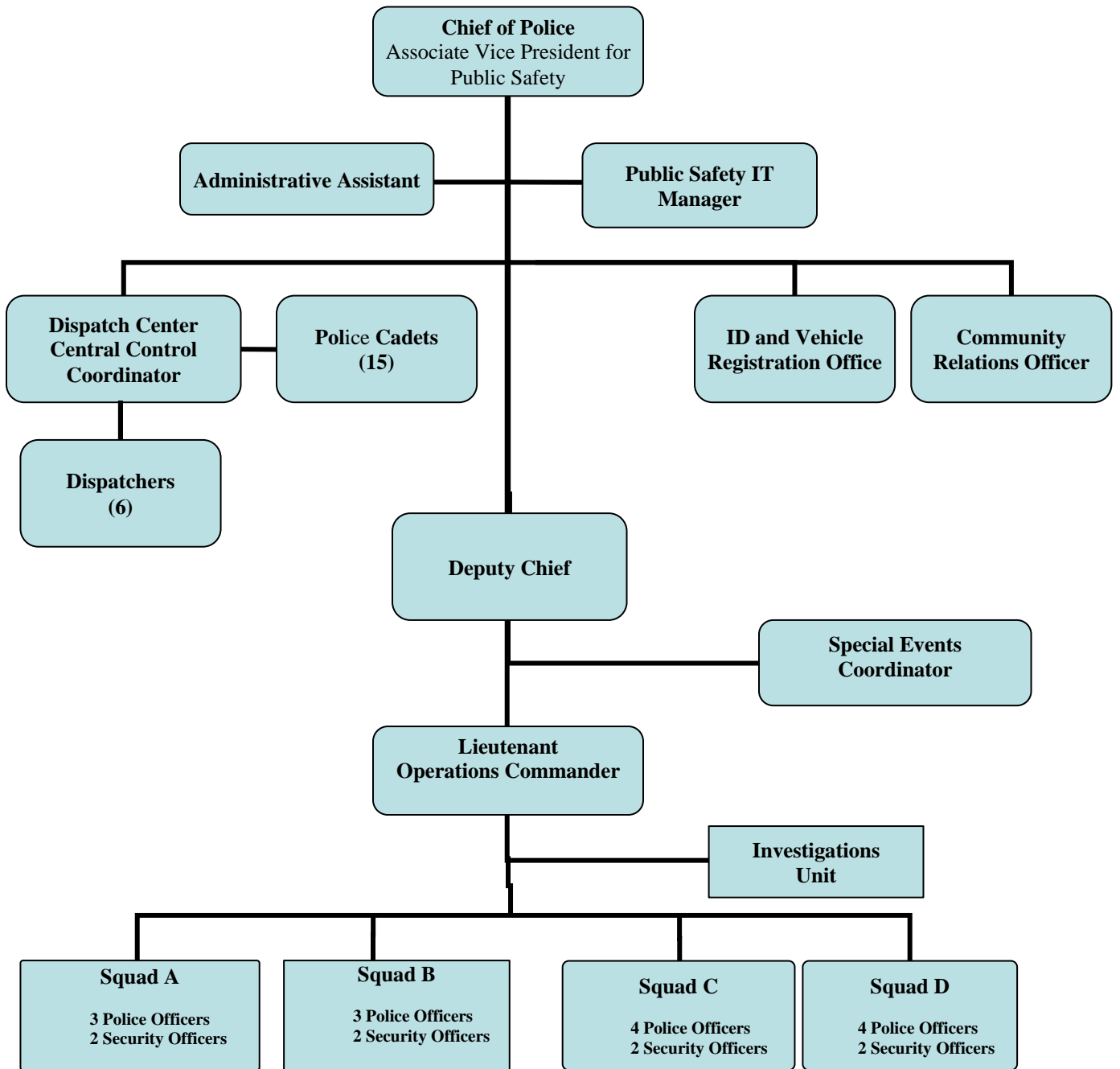
Department of Public Safety Chain of Command and Organizational Chart

Chief of Police (Associate Vice President Public Safety)

- **Administrative Assistant**
- **Public Safety IT Specialist**
- **Central Command Center** (Dispatch Center)
 - **Central Command Coordinator**
 - **Dispatcher (6)**

Major (Deputy Chief)

- **Lieutenant** (Special Events Coordinator)
- **Lieutenant** (Operations Commander) Investigations, Task Force, University Village and Courtyard Apartments
 - **Shift Commander "A, B, C and D" Squads**
 - **Investigations**



Frequently Asked Questions about The Department of Public Safety

Where is the Delaware State University Department of Public Safety located?

Delaware State University Department of Public Safety (Building #52) is located on the main campus at 1200 N. DuPont Hwy., Dover, DE 19904. The Department of Public Safety Building is located directly behind the Price Building and adjacent to the Administration Building.

What is the difference between a Delaware State University Police Officer and a Delaware State University Public Safety Officer?

The Delaware State University Department of Public Safety employs both sworn and non-sworn officers. The difference between police and public safety officers is that police officers must successfully complete a state certified academy of sophisticated police training over a period of up to six months. The Delaware State Police Academy is the preferred source for this training. Upon completion of basic academy, officers are assigned to field training officers and must complete 100 hours of additional field training. Police officers must also complete established hours of in-service training every two years. The public safety officer must successfully complete the Delaware State University Basic Security Officers Training Program meeting 200 hours of classroom and "On the Job" training criteria. All Security Officers will complete 24 hours of annual in-service training hosted by local law enforcement agencies.

Basic training and in service training covers such topics as:

Cultural diversity, weapons qualification, physical training, driver training, crime prevention, investigations, legal issues, statute law, officer stress training, crime scene protection, CPR/basic first aid, police defensive tactics/use of force, evidence processing, patrol techniques, and communications

What is the authority of a sworn Delaware State University Public Safety Officer?

Sworn Delaware State University public safety officers will derive their authority from their appointment by the University and their compliance with the appropriate legislative codes and training guidelines administered by the Council on Police Training (COPT). Sworn Delaware State University public safety officers are empowered and mandated to enforce all federal, state and local laws. Sworn Delaware State University public safety officers and supervisors will be armed, carry oleoresin capsicum spray (pepper spray) and must undergo annual firearm and unarmed self-defense qualifications. In all cases, each officer of the department must use only the minimum amount of force that is consistent with the accomplishment of his/her mission and should exhaust every other reasonable means of apprehension or defense before considering the use of a firearm.

Sworn Delaware State University public safety officers are mandated under Delaware law, Title 11, subsection 1901 (2) as peace officers, duly authorized to arrest any persons who violate state or local laws throughout the state of Delaware State University. A peace officer is defined as any public officer authorized by law to make arrest in a criminal case. Arrest is defined as taking a person into custody so that the person may be forthcoming to answer for the commission of a crime. It is important that the University community understands the listed information:

1. Students or any other persons who commit crimes, such as burglary, on property owned or controlled by Delaware State University, should expect to be arrested and have the case heard in the local court.
2. Persons who resist arrest use inciting language or fail to respond to University police should expect to be arrested and have the case heard in the local court.
3. Students or any other persons apprehended by the University police for various reasons, which may include, but are not limited to, abusive language, disrupting activities of the University, fighting, trespassing and drinking alcoholic beverages on campus, should cooperate with the University police just as individuals cooperate with state and local police. They may be subjected to arrest.

Persons arrested will be eligible for court diversion programs when appropriate. The Delaware State University Department of Public Safety will also assist in keeping the campus safe and attractive and become responsible for traffic control and enforcement of state and campus regulations for motor vehicles.

What Department is responsible for investigating crimes and keeping crime statistics?

The Delaware State University Department of Public Safety is the primary law enforcement agency throughout the University. It is the responsibility and duty of the Department of Public Safety to investigate all crimes and incidents throughout the campus and provide timely notifications to the campus community regarding significant crimes. The Delaware State University Annual Campus Security Report provides statistics for a three-year period. The report is updated annually and is provided to all students, employees and the general public.

The City of Wilmington Police Department is the primary law enforcement agency to investigate all crimes and incidents at the Wilmington Campus located at 621 N Market St, Wilmington, DE 19801. The Wilmington Police Department is located at 300 N Walnut St, Wilmington, DE 19801, 302.654.5151.

The Delaware State Police: Troop 4 is the primary law enforcement agency to investigate all crimes and incidents at the Owen's Campus, located at 21179 Seashore Hwy., Georgetown, DE 19947. The Delaware State Police: Troop 4 is located at 23652 Shortley Road, Georgetown, DE 19947, 302.856.5850.

If I am victimized by a crime off campus, how can the Department of Public Safety help me?

The Delaware State University Department of Public Safety has an outstanding working relationship with surrounding agencies, such as, the Delaware State Police, the City of Dover Police Department and the Department of Justice, commonly known as the Attorney General's office. If you are a victim of a crime that occurred on or off campus, the Delaware State University Department of Public Safety will assist you and/or refer you to the appropriate agency.

How do I report suspicious activity or a criminal act?

Any person living, studying, working and/or visiting at the University campus who is victimized by, observes or has knowledge of a criminal action/offense or other emergency should immediately report such action, offense or emergency to the Delaware State University Department of Public Safety or to any University official she or he feels comfortable talking to. The Department of Public Safety will investigate all complaints. Violations of the law can result in charges by the Department of Public Safety, local police, and referral to the provost and Judicial Affairs. Students, faculty, staff and visitors are encouraged to report all suspicious persons and activities, crimes that might be witnessed or crimes against themselves occurring on campus and in the surrounding communities to the Public Safety Headquarters. You may report the incident in person at the Department of Public Safety Building, located directly behind the Price Building, or by dialing the non-emergency number 302.857.6290 or emergency on-campus number 4444. If you wish to remain anonymous, you can report any criminal or suspicious activity on the Delaware State University Department of Public Safety Tip Line at 302.857.7918.

How do I file an official complaint against a Delaware State University Public Safety Officer?

It is the policy of the Delaware State University Department of Public Safety to investigate any and all complaints or reports of employee misconduct. Once a complaint has been filed against a public safety officer, the operations commander will conduct an internal investigation to conclude whether the allegations against the officer are valid or invalid. Once the operations commander investigates the allegations, appropriate action will be required to prevent any future occurrences.

Any member, student, employee and/or parent can file a complaint against an officer. When a complaint has been filed from a person outside of the Department of Public Safety, the complaint is not needed in writing.

A thorough investigation of the allegations will be conducted. The investigation will follow procedure in accordance with Delaware state law and the Law Enforcement Officers Bill of Rights, Ch 92, subsections 9200 through 9209, and Delaware State University Department of Public Safety Policy and Procedures.

The completed investigation is then submitted to the director of public safety for final review and approval. Upon completion, the director or a designee notifies the complainant explaining the allegations and the findings/outcome of the investigation.

In cases regarding the excessive use of force, the director of the Department of Public Safety will make notification to the Vice President of Human Resources or his or her designee.

What is the Delaware State University Police Cadet Program?

The Delaware State University Police Cadet Program consists of 20 full-time students who are state certified police cadets. The police cadets work on a daily basis to provide evening escorts, assistance with university events and extra security within the student population. The Delaware State University Police Cadet Program is designed to be a meaningful learning experience for academic field placements. These patrollers will be the “eyes and ears” of the campus safety program and will be supervised by managers of the Delaware State University Department of Public Safety.

What is the S.E.C.U.R.E. Program?

The Security Enforcement of Campus and University Rules and Ethics (S.E.C.U.R.E.) was established in November 2005. This program is designed to improve safety on campus by detecting safety hazards, enforcing parking and roadway regulations and informing the campus community of public safety activities along with timely warning notification alerts.

What is the Delaware State University (DSU) Emergency Alert System?

Delaware State University has recently invested in a communication system that will provide you with timely notification in the event of an emergency or threat. The effectiveness of this new system—called “DSU Emergency Alert”—will depend largely on each student’s involvement in providing their phone and email information.

The DSU Emergency Alert system (provided by Instant Alert - Honeywell) will enable the University to give you timely notification of any potential or actual emergency/threat that may exist – whether it is a weather event, an environmental mishap such as a chemical leak, a fire, a criminal threat or any other type of emergency.

In the case any such emergency, the Department of Public Safety will have the capability to contact you immediately via cell phone (by both voice and text message), home or resident hall phone and email to inform you of what has transpired and what precautions you need to take. The DSU Emergency Alert

system is another important way that the University can contact you, in addition to the other communications media we currently use.

To make the DSU Emergency Alert System as effective as possible, we need each student to provide DSU with all of their communications information – cell and home phone numbers as well as an alternative (non-DSU) email address. While the University already has your university email address, many of you have an alternative email provider (such as Yahoo or Hotmail) that you use more frequently. The University also may not currently have that alternative email address, your cell or home phone information.

What is the Family Educational Rights and Privacy Act (FERPA)?

The Family Educational Rights and Privacy Act (FERPA) (20 U.S.C. § 1232g; 34 CFR Part 99) is a federal law that protects the privacy of student education records. The law applies to all schools that receive funds under an applicable program of the U.S. Department of Education.

FERPA gives parents certain rights with respect to their children's education records. These rights transfer to the student when he or she reaches the age of 18 or attends a school beyond the high school level. Students to whom the rights have transferred are "eligible students."

Parents or eligible students have the right to inspect and review the student's education records maintained by the school. Schools are not required to provide copies of records unless, for reasons such as great distance, it is impossible for parents or eligible students to review the records. Schools may charge a fee for copies.

Parents or eligible students have the right to request that a school correct records which they believe to be inaccurate or misleading. If the school decides not to amend the record, the parent or eligible student then has the right to a formal hearing. After the hearing, if the school still decides not to amend the record, the parent or eligible student has the right to place a statement with the record setting forth his or her view about the contested information.

Generally, schools must have written permission from the parent or eligible student in order to release any information from a student's education record. However, FERPA allows schools to disclose those records, without consent, to the following parties or under the following conditions (34 CFR § 99.31):

School officials with legitimate educational interest

- _ Other schools to which a student is transferring
- _ Specified officials for audit or evaluation purposes
- _ Appropriate parties in connection with financial aid to a student
- _ Organizations conducting certain studies for or on behalf of the school
- _ Accrediting organizations

- _ To comply with a judicial order or lawfully issued subpoena
- _ Appropriate officials in cases of health and safety emergencies
- _ State and local authorities, within a juvenile justice system, pursuant to specific state law

Schools may disclose, without consent, "directory" information such as a student's name, address, telephone number, date and place of birth, honors and awards and dates of attendance. However, schools must tell parents and eligible students about directory information and allow parents and eligible students a reasonable amount of time to request that the school not disclose directory information about them. Schools

must notify parents and eligible students annually of their rights under FERPA. The actual means of notification (special letter, inclusion in a PTA bulletin, student handbook or newspaper article) is left to the discretion of each school.

Family Policy Compliance Office

U.S. Department of Education

400 Maryland Ave., SW

Washington, DC 20202-5920

www.ed.gov/policy/gen/reg/ferpa/index.html

REPORTING CRIMINAL ACTIVITY

Information on crimes which may impact or relate to the surrounding community and state is shared directly with appropriate law enforcement agencies. In cases where students are involved in violations of campus policy and/or state and local law, both internal and external judicial action may be taken. The Office of the Vice President for Enrollment Management and Student Affairs will initiate disciplinary action in accordance with University judicial code for violators who are members of the University community. Internal judicial action will be initiated, in addition to, not in lieu of, filing of criminal charges before the local district court system. Crimes by University student groups at off campus locations are reported to Delaware State University police by local police authorities.

The University Department of Public Safety has established a successful open line of communication with the Dover Police Department through which we receive local crime statistics and information that may impact or relate to our immediate and/or surrounding communities.

REPORTING CRIMES AND EMERGENCIES

It is Delaware State University's policy to protect the rights, the safety and the welfare of the students, faculty and staff and everyone in the surrounding University community. All persons are expected to conduct themselves with proper respect for one another and each other's property.

It is extremely important to note that each member of the Delaware State University community has the right to be free from acts of violence and threats of

violence. They are expected and required to comply with all state, city and federal laws. Any person living, studying, working and/or visiting at the University campus, who is victimized by, observes or has knowledge of a criminal action/offense or other emergency should immediately report such action, offense or emergency to the Delaware State University Department of Public Safety or to any University official he or she feels comfortable talking to. All complaints will be investigated by the University Department of Public Safety.

Violations of the law can result in charges by the Delaware State University Department of Public Safety and/or local police, and referral to the Vice President for Enrollment Management and Student Affairs. Students, faculty, staff and visitors are encouraged to report all suspicious persons and activities, crimes that might be witnessed or crimes against themselves occurring on campus and in the surrounding communities to the University Department of Public Safety. You may report the incident in person at the Delaware State University Public Safety Building, located directly behind the Price Building, or by dialing the non-emergency number 302.857.6290.

All incoming reports of criminal activity involving Delaware State University students are investigated. After an incident is reported, an officer is dispatched to the site of the complainant/victim or reporting person. Police or security officers prepare and submit incident reports when warranted and the investigator will complete all necessary follow up investigations.

Access to Campus Facilities and Resident Halls

The Information Center, commonly known as the Welcome Center, is located at the main entrance of the University. The Welcome Center is staffed by a member of the Department of Public Safety, who is to assist visiting motorists and anyone requiring information concerning the University. With limited constraints, Delaware State University is an open campus and cordially invites all visitors and authorized guests to the campus. Except for the dormitories and resident halls, most campus facilities are open during weekday business hours. During the evenings and weekends access to the campus is restricted to persons affiliated with the University or invited guests of a person affiliated with the University. All vehicles must be registered and visitors must have temporary parking passes as these vehicles are in violation and subject to be towed at the owner's expense.

An automated card access system has been installed in all dormitories, resident halls and most academic buildings. Unlimited access is given to students, faculty and staff between operating hours. The dormitories and resident halls remain locked 24 hours a day. Guest and other visitors may visit the dormitories or resident halls only when sponsored by a member of the University community.

Security Consideration in Maintenance of Campus Facilities

Delaware State University Facilities Management (Plant Maintenance/Operations Center) maintains the University's buildings and grounds with a concern for

safety and security. Frequent inspections are made by members of the Department of Public Safety to spot any changes in interior and exterior lighting conditions. In addition, defective lighting conditions and repairs in the buildings are recorded by the Department of Public Safety and forwarded to the facilities management staff. Furthermore, Delaware State University public safety officers spot and report hazardous conditions during the course of their normal patrols.

Shuttle Transportation Services

The Delaware State University Transportation Department offers free campus shuttle services for students, faculty, staff and visitors. The shuttle is handicap-equipped to accommodate disabled persons. The mission of the Transportation Department is to provide a safe and convenient mode of transportation for students. The vans operate on a fixed schedule between the University, Dover Mall and the University Courtyard Apartments with flag stops in between. In addition, there is a banking run to downtown Dover and an extended shopping run to the other major shopping centers in the Dover vicinity.

The Transportation Center also provides information about buses, trains and planes to students attempting to make travel arrangements. The operating schedule for student transportation is on a 45-minute cycle.

Daily Schedule

Saturday–Sunday 9:00 a.m.–5:00 p.m.

Monday–Friday 7:00 a.m.–10:00 p.m.

Closed on Holidays

(Van Shuttle Schedule subject to change without notice)

For more information and a detailed shuttle service schedule, contact the Transportation Department or call 302.857.6274

Emergency Phones

Located around the campus of Delaware State University are numerous highly visible, blue light emergency telephones and call boxes. These security measures are provided to ensure the safety of the campus community. To activate the emergency telephones and call boxes, simply push the large red button which connects you to the Delaware State University Department of Public Safety dispatcher. The dispatcher will then identify the activated emergency telephone and immediately dispatch an officer to that location while asking the nature of the emergency. Try to remain calm. Speak loudly and clearly and give the location and nature of the emergency

Crime Prevention and Awareness Programs

Delaware State University Department of Public Safety will use a variety of methods to address issues of campus safety. The key to preventing crime is

through awareness and educational programs. This strategy, modeled after the community policing concept allows the Department of Public Safety to provide services to students, staff and the University community to fulfill their needs. Delaware State University and the Department of Public Safety sponsor safety and educational programs regularly. These programs and seminars will focus on rape and date rape prevention, substance abuse, driving under the influence (DUI) and general safety topics. The Department of Public Safety will hold special sessions during student, parent, faculty and staff orientations to ensure that proper information is disseminated concerning safety and security. These orientations are to familiarize new students with state law, campus policies and personal safety on and off campus. The Department of Public Safety will focus on crime prevention programs on campus and throughout the surrounding community.

With diligent efforts to expand crime prevention, the Department of Public Safety has installed approximately 200 surveillance cameras in several locations throughout campus, including the University Village and Courtyard Apartments, as well as the Administration and MBNA buildings. Additionally, surveillance cameras will be installed in the remaining resident hall areas.

With further crime prevention efforts, Delaware State University Department of Residence Life has staffed each resident hall with resident managers, assistant resident managers and night support staff members. In addition to staff, there is a resident advisor (RA) assigned to each floor in some cases on each wing. All members of the residence hall staff have been carefully chosen through a selection process established by the Director of Residence Life. The residence hall staff has the skills, knowledge and information to help the resident learn about and adjust to Delaware State University and the group living environment. Training is conducted on campus prior to the fall semester for the residence hall staff.

Fire Prevention

All academic buildings, resident halls and dormitories are equipped with smoke detectors and sprinkler systems that are connected to a fire alarm panel in each building. The fire alarm system is connected to the Department of Public Safety and monitored by Advantech Securities Inc.

The Delaware State University Risk Management Department holds two unannounced fire drill evacuations throughout the academic school year. The University requires all occupants of a building to evacuate during fire drill procedures. Students, faculty and staff who refuse and ignore the fire alarms may face disciplinary action.

Counseling Department

The Delaware State University Counseling Department was established to provide counseling to students and to provide a wide range of personal

development opportunities to help students maintain good mental health. These services are structured to assist students in utilizing the resources of the institution in order to maximize educational opportunities. Counselors are involved in helping students explore their needs, feelings, interpersonal relationships and life goals.

The Delaware State University Counseling Department provides a variety of counseling methods and prevention programs. The counseling methods include group counseling, individual counseling, peer counseling, substance abuse counseling, crisis intervention and Veteran Affairs Counseling. The prevention programs include personal development work shops, suicide awareness, assessments for at-risk students, depression screening, inventories and career exploration and sexual assault response advocate (S.A.R.A.) program.

The S.A.R.A. program provides on-call support for student victims of sexual assault and domestic violence, educational workshops and campus wide awareness events. The following is contact information for the Department of Counseling.

Director of Counseling: Ralph Robinson **Counselors:** Pauline Meek,
Michael Monk

Coordinator of Veteran Affairs: Wendelin Henry **Secretary:** N/A

Department of Counseling hours of service:

Monday–Friday 8:30 a.m.–4:30 p.m.

Evening and Weekends by appointment:

Office: 302.857.7381

Fax: 302.857.7382

Safety Tips

The Delaware State University Department of Public Safety is dedicated to the safety and security of the campus community it serves. Public Safety, therefore, provides an escort service on campus.

The Delaware State University Department of Public Safety provides a free walking escort service for students, staff, faculty and visitors to or from any location on campus or within the designated escort perimeter. The escort service is conducted by our public safety cadets and is designed to enhance your safety and peace of mind if you must walk after dark. The primary goal of this service is to enable you to travel from one campus location to another with a greater sense of security. This service is available during the hours of darkness every night of the week.

To arrange for escorts, please call 857.6290. When calling, please be prepared to give the following information: your name, your exact location and your destination.

The Department of Public Safety carefully screens and selects student escorts. The cadets can be identified by their blue Public Safety shirts or jackets. All cadets are equipped with two-way radios and flashlights for quick dispatch and prompt, safe service.

The cadets will provide you with a walking escort to or from any location on campus.

Safety Corner

- _ Always be alert and aware of your surroundings. Walk with a confident attitude.
- _ Avoid walking alone at night. Walk in a group or take the University shuttle when possible. If those things are not possible, call the DSU Department of Public Safety for an escort.
- _ When walking alone, make sure to use well-lighted paths and sidewalks while taking the most direct route.
- _ Use crosswalks and pedestrian crossing signals to safely cross streets.
- _ All suspicious activity should be reported to the Delaware State University Department of Public Safety (857.6290) on campus immediately. The timely report of information is key to successful investigations. Timely reporting of information increases the odds of recovering stolen property and the successful prosecution of criminals.
- _ Keep your doors locked. Do not prop open residence doors!
- _ Do not lend your keys, ID card or PDI card to anyone!
- _ Report all maintenance problems (broken locks, windows, etc.) to Residence Life immediately.
- _ Attend Security Awareness programs held on campus throughout the school year.
- _ Identify your valuables! Register your valuables (computer, bicycle, stereo, etc.) with the DSU Department of Public Safety.
- _ Be aware of campus and local crime trends. Remember to educate yourself because you are your best protection.

Bicycle Patrol Program

In a further effort to increase the level of service and safety for the Delaware State University community, the Department of Public Safety initiated a Bicycle Patrol program, which brings our officers into closer contact with campus community members. It is more environmentally friendly than traditional car patrols and allows our officers quick access to all areas of the Delaware State University campus. Bicycle patrols increase the patrol range of public safety officers and significantly decrease response time to calls. Public safety officers can cycle through crowds, across isolated areas and around obstacles, and can approach suspicious situations discreetly. Our Bicycle Patrol program has helped to increase the Department of Public Safety's visibility and has consequently helped to reduce crime. It also allows public safety officers to be more approachable and more active in the Delaware State University community. The Bicycle Patrol Program demonstrates how the Delaware State University Department of Public Safety utilizes the community policing concept.

All officers of the Delaware State University bike patrol unit must attend and successfully complete a mountain bike patrol course consisting of an eight-hour program with both classroom and field instruction. Upon completion of the course, the officer will have developed a heightened awareness of the importance of fitness, nutrition, injury prevention and physical well-being. The officer will also have a comprehensive understanding of standard operating procedures, crime prevention techniques, tactical maneuvers and communication.

Motorist Assistance Program

The Motorist Assistance Program (MAP) can come to your rescue and best of all, it's free! Our Department of Public Safety provides a variety of services to assist motorists on the DSU campus. The Department of Public Safety provides this service 24 hours a day, seven days a week.

_ **MAP Services**

_ **Jump-start:** Provided to those vehicles with a "dead" or weak battery.

_ **Gas:** An officer will provide a gas can and transportation to the nearest service station so you may purchase gasoline for your vehicle.

_ **Water:** Provided for vehicles that have overheated.

_ **Tow Services:** Should you have difficulty with your vehicle and need a tow truck, we will contact the service of your choice and wait with you (if time is available) until your tow arrives. Please be advised that individuals requesting the tow service will incur the expenses of towing the vehicle to the location of their choice.

Annual Campus Safety and Security Report

In 1990, Congress enacted the Crime Awareness and Campus Security Act, which amended the Higher Education Act of 1965 (HEA). This act required all post secondary institutions participating in student financial aid programs to disclose campus crime statistics and security information. This act was amended in 1992, 1998 and 2000. The 1998 amendments renamed the law the Jeanne Clery Disclosure of Campus Security Policy and Campus Crime Statistics Act in memory of a student who was slain in her dorm room in 1986.

The Clery Act requires higher education institutions to give timely warnings of crimes that present a threat to the safety of students or employees and to make public their campus security policies. The Clery further requires that crime data be collected, reported and disseminated to the campus community and are also submitted to the Department of Education.

Timely Warning Notices

The Delaware State University Department of Public Safety will make every effort to provide a safe environment for the University community. In the event a serious crime occurs on the campus, the Department of Public Safety will provide the University Community with a timely notice or safety alert. The Department of Public Safety will disseminate the timely notice in various ways. The alert is posted throughout the campus and posted on the Department of Public Safety's Web site (www.desu.edu/police/secure). The notice will provide pedigree information about the incident, crime prevention and safety information. All crimes that are reported are listed in a daily log and reports are filed with a case number.

Safety on campus is of the utmost importance to the Department of Public Safety. The key to keeping a safe and secure environment throughout the University community is cooperation. By everyone working together and taking responsibility, we can all help each other regarding campus security and personal safety.

Daily Crime Log

The Department of Public Safety maintains a Daily Crime log that records, by the date the incident was reported, all crimes and other serious incidents that occur on the campus of Delaware State University. The log is open for public inspection at the Department of Public Safety, located on the main campus.

The Department of Public Safety posts specific incidents in the Daily Crime Log within two business days of receiving a report of an incident, and reserves the right to exclude reports from the Daily Log under exigent circumstances.

Daily Fire Log

Delaware State University Risk Management Department maintains a Daily Fire Log that records, by the date and the fire incident reported on the campus of Delaware State University. The log is open for public inspection at the Department of Public Safety, located on the main campus.

The Department of Public Safety and the Risk Management Department posts specific incidents in the Daily Fire Log within two business days of receiving a report of an incident, and reserves the right to exclude reports from the Daily Fire under exigent circumstances.

Alcohol and Drug Policy

Delaware State University has a Zero Tolerance Policy that prohibits all illegal and unauthorized possession and/or use of alcohol and drugs. The zero tolerance policy is effective as it relates to on-campus activities and University-sponsored off-campus activities.

Although the legal drinking age in Delaware is 21, University regulations prohibit any student from possessing or consuming alcohol in the residence halls, dining hall and at all student social functions, regardless of age. Any student found to be in possession of or consuming alcoholic beverages on campus will be subject to University disciplinary action and/or criminal action.

The University will uphold the federal and state laws concerning the illegal use, possession, consumption, sale, trafficking, manufacturing, dispersing and/or distribution of drugs, narcotics, controlled substances, counterfeit substances and drug paraphernalia. Any student found in violation of this policy will be referred to the Delaware State University judicial system.

The Office of Student Affairs distributes the Delaware State University Student Handbook to the students. As a deterrent to alcohol and other drug use and abuse, the University supports, promotes and sponsors programs that serve to enhance student, faculty and staff awareness of the devastating effects and consequences of indulging in the use and abuse of alcohol and other drugs.

Sexual Harassment Policy

In compliance with Delaware Code and Title VII of the Civil Rights Act (as amended), the University recognizes its obligation to protect students and employees from sexual harassment. The University believes that sexual harassment seriously damages the integrity of our academic institution, destroys the institution's positive work and educational atmosphere and causes psychological and/or physiological damage to the victim. When sexual harassment rises to the level that it creates a hostile work or academic environment, it violates federal and state law. The University is strongly committed to promoting an educational and work environment free from sexual

harassment of any kind. Sexual harassment is considered to be a form of discrimination and is covered under the non-discrimination policy adopted by the University. This separate policy (sexual harassment) is intended to emphasize the importance of this issue.

It is a violation of this policy for any member of the University staff to harass a student or employee through conduct or communications of a sexual nature. It is also a violation of this policy for students to harass other students through conduct or communications of a sexual nature, for students to harass staff or for students or employees to harass other members of the University community or visitors on campus property during University-sponsored activities off campus or while transacting University business.

Sexual advances, requests for sexual favors and other oral, written or physical conduct of a sexual nature constitutes sexual harassment when the behavior is not welcome by the recipient and is offensive to a reasonable person (as judged by the University Administration). Such conduct violates federal law when:

1. Submission to such conduct is made, either explicitly or implicitly, a term or condition of an individual's education or employment;
2. Submission to or rejection of such conduct by an individual is used as the basis for academic or employment decisions affecting that individual; or
3. Such conduct has the purpose or effect of substantially interfering with an individual's academic, professional or employment performance or creating an intimidating, hostile or offensive academic or employment environment.

This policy prohibits sexual harassment of others even when the conduct does not rise to the level of creating a hostile work environment under federal law. Conduct of a sexual nature that can be sexual harassment may include, but is not limited to the following examples:

1. Verbal harassment or abuse of a sexual nature;
2. Pressure for sexual activity;
3. Repeated communications to a person, with sexual or demeaning implications;
4. Unwelcome touching;
5. Suggestive or demeaning sexual involvement accompanied by implied or explicit threats concerning one's grades, job, etc.

The President of the University will implement this policy by establishing a procedure to handle complaints made about sexual harassment or any other forms of harassment or discrimination protected in the non-discrimination policy. The procedure will provide

1. That the right to confidentiality for the complainant and the accused will be respected consistent with the University's legal obligations, and with the necessity to investigate allegations of misconduct and take into corrective actions when this conduct has occurred; and
2. That persons filing complaints of sexual or other forms of harassment or discrimination will be protected against reprisals, but that the deliberate filing of false accusations of harassment or discrimination will be condemned and may lead to possible disciplinary action.

A substantiated charge against an employee of the University will subject that employee to disciplinary action that may include termination from employment. A substantiated charge against a student of the University will subject that student to disciplinary action including suspension or expulsion.

Sexual Assault Policy

Sexual assault is defined as any unwanted touching of a sexual nature. This includes, but is not limited to:

- _ Unwanted kissing, touching or fondling
- _ Penetration with a finger or a foreign object
- _ Rape (vaginal intercourse, oral-genital contact, anal intercourse)

These acts constitute sexual assault when they are attempted or committed through force, threat or intimidation when the perpetrator has been informed that his/her actions are unwanted or through the use of the victim's incapacity or helplessness caused by alcohol or other drugs.

Rape is defined as "unlawful sexual intercourse by force or deception." A person is guilty of rape in the first degree who intentionally engages in sexual intercourse with another person without consent.

Rape is generally categorized by laymen into three areas based on the characterization of the rapist: stranger rape, date/acquaintance rape and gang/group rape.

Stranger rape: The sexual assault of an individual by someone the victim does not know.

Date or acquaintance rape: The sexual assault of an individual by someone the victim knows, usually an acquaintance or a date. Date rape is the most common type of rape occurring on college or university campuses but the least frequently reported.

Group/Gang Rape: The sexual assault of an individual by multiple perpetrators.

It is the responsibility of Delaware State University to make every effort to see that the victim of a reported sexual assault is offered medical and psychological care, counseling services, change of a victim's living and/or academic situations (when such changes are reasonably available and are requested by the victim), and the appropriate community services. The University will also assist with the compiling of information which is necessary to prosecute the suspect through both the criminal and University Judicial systems.

Reporting Sexual Assault

On college campuses, date rape and acquaintance rape are of significant concern. Sexual assault is illegal and a violation of Delaware State University Policy.

The decision to report the crime is yours. You do have the option of reporting the incident to the Delaware State University Department of Public Safety (857.6290) or directly to the City of Dover Police Department (9-911). In either case, the University Department of Public Safety will be able to assist you with the process.

The University Department of Public Safety will also contact the assistant vice president for student affairs, who will make other contacts.

Reporting a sexual assault may lessen the chances of it happening to others. Regardless of whether or not you press criminal charges, academic and judicial intervention is available to you through the assistant vice president for student affairs, who is available to coordinate efforts to meet your needs throughout the crisis. If requested, the assistant vice president for student affairs will assist with safety concerns such as consulting with academic chairpersons for class options, helping with your living situation, or a protection order, discussion with significant others/parents, etc.

The assistant vice president for student affairs provides information, education, intervention and referral for all interested women and men. The University will respond promptly, fairly and decisively to all reports of sexual assault. Students should feel free to report all instances of sexual assault.

If you or someone you know has been raped, it is important that immediate medical attention be obtained. A number of resources are available both on and off campus to assist an assault victim.

The following procedures and services are strongly recommended:

- Get to a safe place as soon as you can.
- Contact someone you trust to be with you and support you.
- If raped, you should have a complete medical exam. You will benefit from being examined for physical injury and disease.

- Please do not shower, wash, bathe or douche or urinate, as this will destroy evidence that supports a legal case against an assailant if you choose to prosecute.
- Do not change clothes.
- Go to the hospital for medical assistance. Should you need transportation, the University Department of Public Safety (857.6290) will assist you.
- DSU Health Services (857.6393) can assist in obtaining follow-up treatment and medical care, if desired.
- The Sexual Assault Nurse Examiner Program (SANE) is available to assist.

If the assault occurred some time ago

- You may just now be realizing that you still have options available to you.
- Medical attention may still be needed for treatment of physical symptoms.
- Seek counseling. Unresolved experiences of sexual assault can have long-term psychological and social effects.

What to do if you or someone you know is sexually assaulted:

If a sexual assault occurs, safety and medical attention are primary concerns and first considerations. On campus and in the local area, 24-hour assistance is available. Whether or not you decide to report the incident, seek medical treatment immediately and get counseling as soon as possible.

In any sexual assault incident, preserving evidence is extremely important in pursuing a criminal or other judicial matter. Do not douche, bathe, shower or change clothes before seeking medical attention. In addition, do not wash sheets or other bed coverings where critical DNA evidence may be found.

REDUCING THE RISK OF SEXUAL ASSAULT

- Psychological preparedness: The best way to protect yourself is to use your head. Be assertive. Make sure you communicate your desires and limits clearly.
- You always have the right to set sexual limits in any relationship.
- Be wary of behavior that makes you feel uncomfortable.
- Trust your instincts: If the behavior persists, LEAVE.

- Avoid excessive use of alcohol and other drugs.
- Be aware of your surroundings: Do not assume that you are always safe.
- Vary your routines whenever possible.
- Try not to walk alone at night. If you must do so, walk in lighted areas only. Walk at a steady pace and look confident. Show that you are in control; body language is important in discouraging aggression. If you think someone is following you, abruptly switch directions or cross the street. If you are still being followed, go to the nearest public place and ask for help.
- Do not jog alone. If you must go by yourself, stay well clear of isolated or poorly lighted areas.
- Keep your doors and windows locked.
- When calling out for help—if you must ever call out for help in a building, yell, “Fire!” If you call “Help!” or “Rape!” people may be reluctant to become involved or may not take it seriously, but they always come out to see if there’s a fire.
- Never, ever hitchhike.
- Educate yourself concerning sexual assault prevention tactics and strategies.
- Avoidance Strategies/Indirect Prevention: Talk your way out of the situation. Use gimmicks. Blow your whistle. Practice screaming. Use noise and any attention getter you can think of.
- Confrontational Strategies/Direct Prevention: If you say something, mean it, and be prepared to follow up. Do only what you need to do to get away safely.

SEX OFFENDER REGISTRATION POLICY:

In accordance with Title 11, Chapter 4120 and 4121 of the Delaware Code, information regarding registered sex offenders is maintained by the Delaware State Bureau of Identification (SBI). SBI has created the Sex Offender Central Registry, a searchable database that may be accessed via an internet website. Convicted sex offenders from out of state must register with the Delaware State Police and SBI within 7 business days of establishing permanent or temporary residency within the State of Delaware and all registrants must indicate where they intend to reside, be employed and/or study.

The Delaware State Bureau of Identification provides Delaware State University Department of Public Safety a list of registered sex offenders who have indicated that they were either enrolled or employed at Delaware State University. Delaware State University is required to inform the campus community that a SBI registration list of all sex offenders will be maintained and available at the Department of Public Safety Building, located directly behind the Price Building.

In addition, a list of all sex offenders in Delaware is available from SBI at www.state.de.us/dsp/sexoff/. This database may be used to locate registered sex offenders by name, address, city, county, or zip code.

MISSING PERSON POLICY

Upon receipt of a missing person report, the DSU Department of Public Safety will conduct an immediate, thorough, and timely investigation to determine the safety and whereabouts of the person. In addition, any information to include but not limited to; a complete physical description, full name and date of birth, Social Security number (if known), any identifying characteristics, any vehicle information will be entered into the National Crime Information Center (NCIC) and the Delaware Criminal Justice Information System (DELJIS) computer as soon as all available information is received. In addition, the DSU Department of Public Safety will notify adjoining law enforcement agencies to assist in the search and investigation of the missing person.

After determining that a residential student is missing, the Vice President of Student Affairs will be immediately notified. The Vice President of Student Affairs will be forwarded emergency contact information for the missing student(s) 18 years of age or older and/or parent/guardian information for missing student(s) who are under the age of 18.

CRISIS AND EMERGENCY SERVICES

In an emergency, help is available 24 hours a day during the academic year. If an emergency occurs during the regular business hours, call the Counseling Center at 302.857.7381 or the University Department of Public Safety at 302.857.6290.

CONSUMER HOTLINE NUMBERS

Suicide Prevention and Mental Health Hotline 1.800.345.6785

Mental Health Association 1.800.287.6423

Domestic Violence Hotline 1.302.422.8058

Runaway & Homeless Youth Hotline 1.302.654.0808

CRIME STATISTICS

The Delaware State University Department of Public Safety has an excellent working relationship with surrounding law enforcement agencies such as the Delaware State Police, City of Dover Police Department and the Department of Justices, commonly known as the Attorney General's Office.

The Department of Public Safety will disclose any crime report directly to any local law enforcement agency.

Definitions of Reportable Crimes

The following statistics are compiled using the FBI Uniform Crime Reporting/Incident Based Reporting System as a guideline. As defined under the Federal Crime Awareness and Campus Security Act of 1990:

Criminal Homicide

Negligent Manslaughter: The killing of another person through gross negligence.

Murder and Non-negligent Manslaughter: The willful (non-negligent) killing of one human being by another.

Forcible Sex Offenses

Forcible Rape: The carnal knowledge of a person, forcibly and/or against that person's will; or not forcibly or against the person's will where the victim is incapable of giving consent because of his/her temporary or permanent mental or physical incapacity (or because of his/her youth).

Forcible Sodomy: Oral or anal sexual intercourse with another person, forcibly and/or against that person's will; or not forcibly against the person's will where the victim is incapable of giving consent because of his/her youth or temporary or permanent mental or physical incapacity.

Sexual Assault with an Object: The use of an object or instrument to unlawfully penetrate, however slightly, the genital or anal opening of the body of another person, forcibly and/or against that person's will; or not forcibly or against the person's will where the victim is incapable of giving consent because of his/her youth or temporary or permanent mental or physical incapacity.

Forcible Fondling: The touching of the private body parts of another person for the purpose of sexual gratification, forcibly and/or against that person's will; or not forcibly or against the person's will where the victim is incapable of giving consent because of his/her youth or temporary or permanent mental incapacity.

Non-Forcible Sex Offenses:

Incest: Non-forcible sexual intercourse between persons who are related to each other within the degrees wherein marriage is prohibited by law.

Statutory Rape: Non-forcible sexual intercourse with a person who is under the statutory age of consent.

Robbery: The taking or attempting to take anything of value from the care, custody, or control of a person or persons by force or threat of force or violence and/or by putting the victim in fear.

Aggravated Assault: An unlawful attack by one person upon another for the purpose of inflicting severe or aggravated bodily injury. This type of assault usually is accompanied by the use of a weapon or by means likely to produce death or great bodily harm. (It is not necessary that injury result from an aggravated assault when a gun, knife, or other weapon is used which could and probably would result in serious personal injury if the crime were successfully completed).

Burglary: The unlawful entry of a structure to commit a felony or a theft. For reporting purposes this definition includes unlawful entry with intent to commit a larceny or felony; breaking and entering with intent to commit a larceny; housebreaking; safecracking; and all attempts to commit any of the aforementioned.

Motor Vehicle Theft: The theft or attempted theft of a motor vehicle. (Classify as motor vehicle theft all cases where automobiles are taken by persons not having lawful access even though the vehicles are later abandoned—including joyriding).

Arson: Any willful or malicious burning or attempt to burn, with or without intent to defraud, a dwelling house, public building, motor vehicle or aircraft, personal property of another, etc.

Hate Crimes: Defined by state law as one that involves threats, harassment, or physical harm and is motivated by prejudice against someone's race, color, religion, national origin, ethnicity, sexual orientation or physical or mental disability.

Larceny/Theft: A person or persons who knowingly obtain or exerts unauthorized control over the property of another, with intent to deprive the owner of his or her property; knowingly obtains by deception control over the property of another, with intent to deprive the owner of his or her property; or knowingly obtains or exerts control over property in the custody of a law enforcement agency which was explicitly represented to the person by an agent of the law enforcement agency as being stolen.

Simple Assault: A person is guilty of assault if he or she attempts to cause or purposely, knowingly or recklessly or negligently causes bodily injury to another; or attempts by physical menace to put another in fear of imminent serious bodily injury.

Intimidation/Menacing: Defined by state law, any person by some movement of body or any instrument the person intentionally places another person in fear of imminent physical injury.

Vandalism/Criminal Mischief: A person commits, with intent to damage property, and having no right to do so or any reasonable ground to believe that he or she has such a right, he or she inflicts damages to property of a certain dollar amount and/or a person intentionally causes substantial interruption or impairment of a service rendered to the public by a utility.

Other Offenses:

Liquor Law Violations: The violation of laws or ordinances prohibiting: the manufacture, sale, transporting, furnishing, possessing of intoxicating liquor; maintaining unlawful drinking places; bootlegging; operating a still; furnishing liquor to a minor or intemperate person; using a vehicle for illegal transportation of liquor; drinking on a train or public conveyance; and all attempts to commit any of the aforementioned. (*Drunkness and driving under the influence are not included in this definition.*)

Drug Abuse Violations: Violations of state and local laws relating to the unlawful possession, sale, use, growing, manufacturing, and making of narcotic drugs. The relevant substances include opium or cocaine and their derivatives (morphine, heroin, codeine); marijuana; synthetic narcotics (Demerol, methadone); and dangerous non-narcotic drugs (barbiturates, Benzedrine).

Weapons Possession Violations: The violation of laws or ordinances dealing with weapon offenses, regulatory in nature, such as manufacture, sale or possession of deadly weapons, carrying deadly weapons, concealed or openly furnishing deadly weapons to minors; aliens possessing deadly weapons; and all attempts to commit any of the aforementioned.

Criminal Offenses and Crime Statistics

Delaware State University Main Campus:

Type of Offenses:		On Campus	Residential Facilities	Non-campus Building or Property	Public Property
Criminal Offenses:					
Murder/Non-negligent Manslaughter:	2007	0	0	0	0
	2008	0	0	0	0
	2009	0	0	0	0
Negligent Manslaughter:	2007	1	0	0	0
	2008	0	0	0	0
	2009	0	0	0	0
Sex Offenses:					
Forcible Sex Offenses:	2007	5	5	0	0
	2008	2	2	0	0
	2009	3	3	0	0
Non-Forcible Sex Offenses:	2007	0	0	0	0
	2008	0	0	0	0
	2009	0	0	0	0
Robbery:					
	2007	4	2	0	0
	2008	2	2	0	0
	2009	1	0	0	0
Aggravated Assault:					
	2007	4	3	0	0
	2008	2	1	0	0
	2009	3	2	0	0
Burglary:					
	2007	50	36	0	0
	2008	56	50	0	0
	2009	33	27	0	0
Motor Vehicle Theft:					
	2007	1	0	0	0
	2008	0	0	0	0
	2009	1	0	0	0
Arson:					
	2007	0	0	0	0
	2008	0	0	0	0
	2009	0	0	0	0
Hate Crimes:					
	2007	0	0	0	0
	2008	0	0	0	0
	2009	0	0	0	0

Criminal Offenses and Crime Statistics

Delaware State University Main Campus:

Other Criminal Offenses:		
Verbal Domestic Violence Complaints	2007	16
	2008	19
	2009	20
Physical Domestic Violence Complaints	2007	13
	2008	13
	2009	4
Simple Assaults	2007	32
	2008	37
	2009	43
Theft/Larceny	2007	40
	2008	72
	2009	66
Criminal Mischief/Vandalism	2007	92
	2008	59
	2009	43

Delaware State University Wilmington Campus:

Type of Offenses:		On Campus	Residential Facilities	Non-campus Building or Property	Public Property
Criminal Offenses:					
Murder/Non-negligent Manslaughter:	2007	0	0	0	0
	2008	0	0	0	0
	2009	0	0	0	0
Negligent Manslaughter:	2007	0	0	0	0
	2008	0	0	0	0
	2009	0	0	0	0
Sex Offenses:					
Forcible Sex Offenses:	2007	0	0	0	0
	2008	0	0	0	0
	2009	0	0	0	0
Non-Forcible Sex Offenses:	2007	0	0	0	0
	2008	0	0	0	0
	2009	0	0	0	0
Robbery:					
	2007	0	0	0	0
	2008	0	0	0	0
	2009	0	0	0	0
Aggravated Assault:					
	2007	0	0	0	0
	2008	0	0	0	0
	2009	0	0	0	0
Burglary:					
	2007	0	0	0	0
	2008	0	0	0	0
	2009	0	0	0	0
Motor Vehicle Theft:					
	2007	0	0	0	0
	2008	0	0	0	0
	2009	0	0	0	0
Arson:					
	2007	0	0	0	0
	2008	0	0	0	0
	2009	0	0	0	0
Hate Crimes:					
	2007	0	0	0	0
	2008	0	0	0	0
	2009	0	0	0	0

Delaware State University Owens Campus:

Type of Offenses:		On Campus	Residential Facilities	Non-campus Building or Property	Public Property
Criminal Offenses:					
Murder/Non-negligent Manslaughter:	2007	0	0	0	0
	2008	0	0	0	0
	2009	0	0	0	0
Negligent Manslaughter:	2007	0	0	0	0
	2008	0	0	0	0
	2009	0	0	0	0
Sex Offenses:					
Forcible Sex Offenses:	2007	0	0	0	0
	2008	0	0	0	0
	2009	0	0	0	0
Non-Forcible Sex Offenses:	2007	0	0	0	0
	2008	0	0	0	0
	2009	0	0	0	0
Robbery:					
	2007	0	0	0	0
	2008	0	0	0	0
	2009	0	0	0	0
Aggravated Assault:					
	2007	0	0	0	0
	2008	0	0	0	0
	2009	0	0	0	0
Burglary:					
	2007	0	0	0	0
	2008	0	0	0	0
	2009	0	0	0	0
Motor Vehicle Theft:					
	2007	0	0	0	0
	2008	0	0	0	0
	2009	0	0	0	0
Arson:					
	2007	0	0	0	0
	2008	0	0	0	0
	2009	0	0	0	0
Hate Crimes:					
	2007	0	0	0	0
	2008	0	0	0	0
	2009	0	0	0	0

Arrest and Judicial Referrals
Delaware State University Main Campus:

Type of Offenses:		On Campus	Residential Facilities	Non-campus Building or Property	Public Property
Arrest:					
Liquor Law Violations:	2007	6	3	0	0
	2008	11	6	0	0
	2009	8	8	0	0
Drug Abuse Violations:	2007	21	18	0	0
	2008	22	13	0	0
	2009	15	11	0	0
Illegal Weapons Possession:	2007	3	1	0	0
	2008	6	3	0	0
	2009	0	0	0	0
Judicial Referrals:					
Liquor Law Violations:	2007	15	14	0	0
	2008	58	46	0	0
	2009	64	58	0	0
Drug Abuse Violations:	2007	22	22	0	0
	2008	36	26	0	0
	2009	62	55	0	0
Illegal Weapons Possession:	2007	4	3	0	0
	2008	9	9	0	0
	2009	3	2	0	0

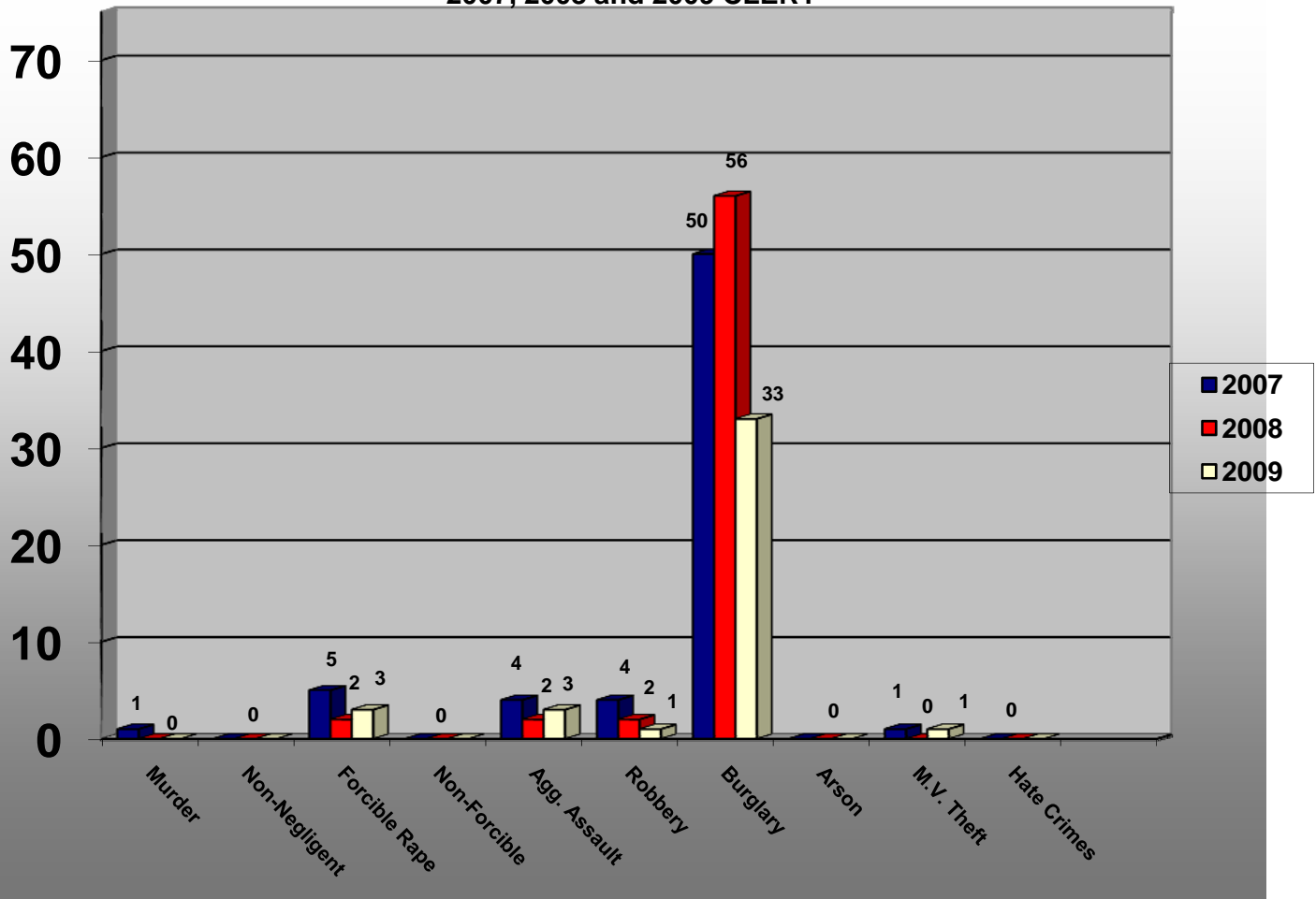
Arrest and Judicial Referrals
Delaware State University Wilmington Campus:

Type of Offenses:		On Campus	Residential Facilities	Non-campus Building or Property	Public Property
Arrest:					
Liquor Law Violations:	2007	0	0	0	0
	2008	0	0	0	0
	2009	0	0	0	0
Drug Abuse Violations:	2007	0	0	0	0
	2008	0	0	0	0
	2009	0	0	0	0
Illegal Weapons Possession:	2006	0	0	0	0
	2007	0	0	0	0
	2008	0	0	0	0
Judicial Referrals:					
Liquor Law Violations:	2007	0	0	0	0
	2008	0	0	0	0
	2009	0	0	0	0
Drug Abuse Violations:	2007	0	0	0	0
	2008	0	0	0	0
	2009	0	0	0	0
Illegal Weapons Possession:	2007	0	0	0	0
	2008	0	0	0	0
	2009	0	0	0	0

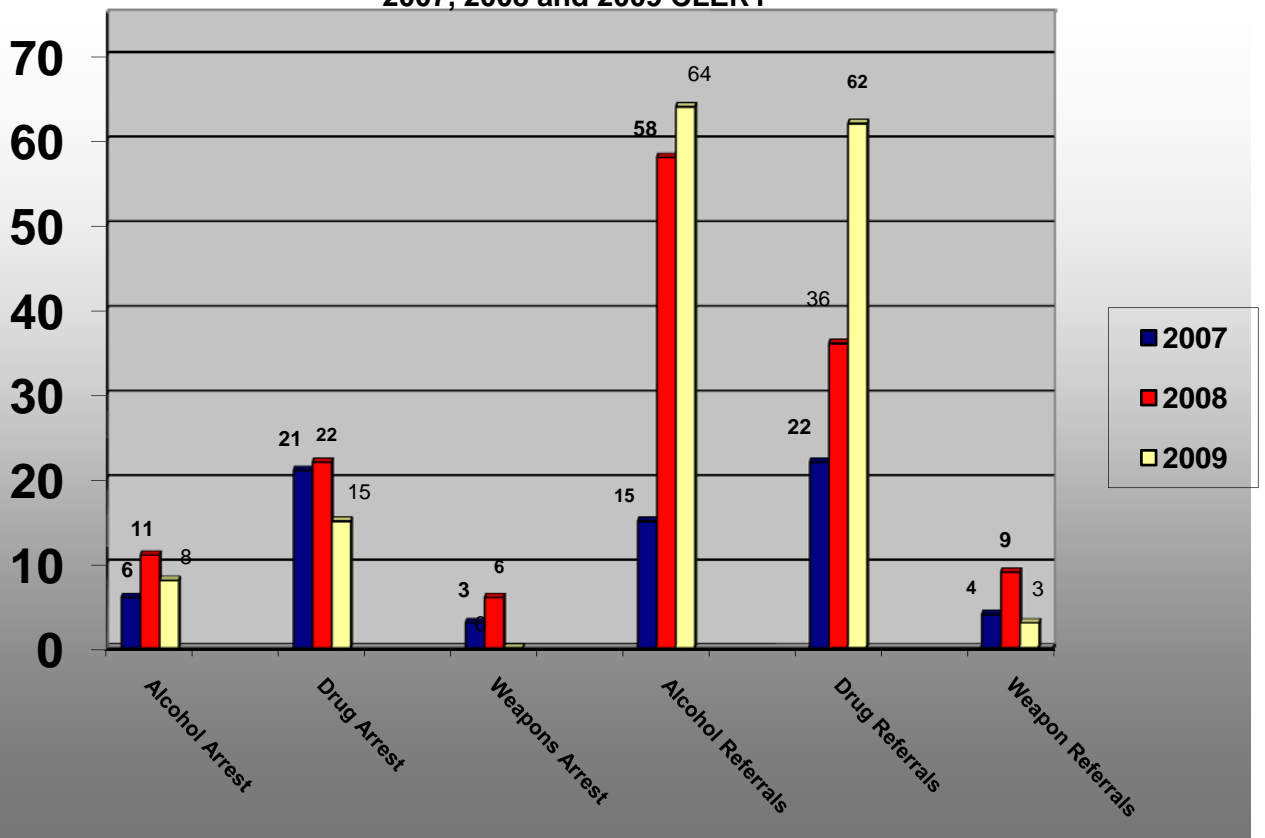
Arrest and Judicial Referrals
Delaware State University Owens Campus:

Type of Offenses:		On Campus	Residential Facilities	Non-campus Building or Property	Public Property
Arrest:					
Liquor Law Violations:	2007	0	0	0	0
	2008	0	0	0	0
	2009	0	0	0	0
Drug Abuse Violations:	2007	0	0	0	0
	2008	0	0	0	0
	2009	0	0	0	0
Illegal Weapons Possession:	2007	0	0	0	0
	2008	0	0	0	0
	2009	0	0	0	0
Judicial Referrals:					
Liquor Law Violations:	2007	0	0	0	0
	2008	0	0	0	0
	2009	0	0	0	0
Drug Abuse Violations:	2007	0	0	0	0
	2008	0	0	0	0
	2009	0	0	0	0
Illegal Weapons Possession:	2007	0	0	0	0
	2008	0	0	0	0
	2009	0	0	0	0

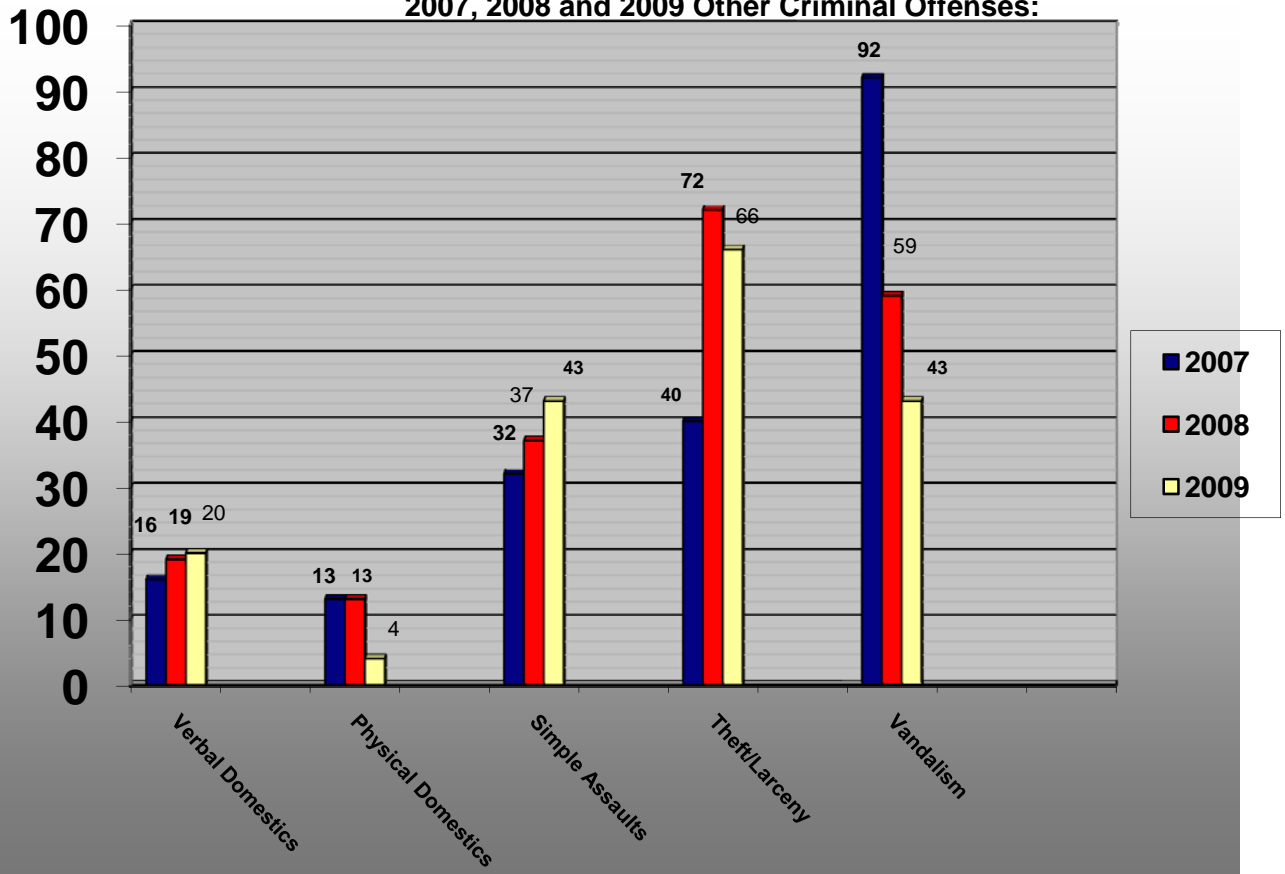
2007, 2008 and 2009 CLERY

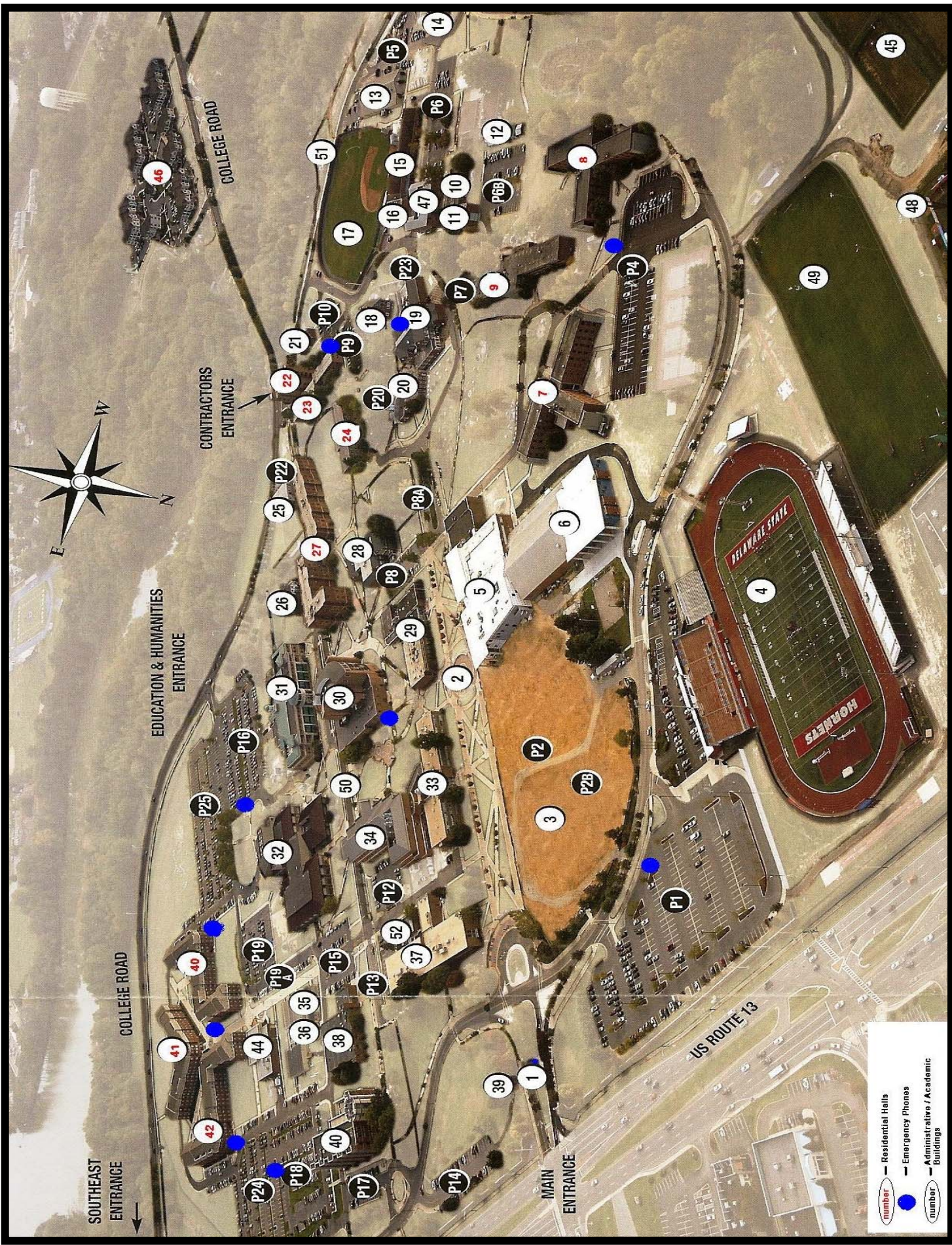


2007, 2008 and 2009 CLERY



2007, 2008 and 2009 Other Criminal Offenses:





SOUTHEAST
ENTRANCE

COLLEGE ROAD

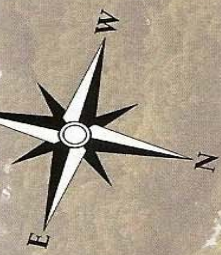
EDUCATION & HUMANITIES
ENTRANCE

CONTRACTORS
ENTRANCE

MAIN
ENTRANCE

US ROUTE 13

-  Residential Halls
-  Emergency Phones
-  Administrative / Academic Buildings



COLLEGE ROAD

4

49

48

45

6

5

2

3

37

38

39

40

41

42

43

44

40

36

35

34

33

32

31

30

29

28

27

26

25

24

23

22

21

20

19

18

17

16

15

14

13

12

11

10

9

8

7

6

5

4

3

2

1

P1

P2

P2B

P3

P4

P5

P6

P6B

P7

P8

P8A

P8B

P9

P10

P11

P12

P13

P15

P16

P17

P18

P19

P19A

P20

P22

P23

P24

P25

P26

P27

P28

P29

P30

P31

P32

P33

P34

P35

P36

P37

P38

P39

P40

P41

P42

P43

P44

P45

P46

P47

P48

P49

P50

P51

P52

P53

P54

P55

P56

P57

P58

P59

P60

P61

P62

P63

P64

P65

P66

P67

P68

P69

P70

P71

P72

P73

P74

P75

P76

P77

P78

P79

P80

P81

P82

P83

P84

P85

P86

P87

P88

P89

P90

P91

P92

P93

P94

P95

P96

P97

P98

P99

P100

P101

P102

P103

P104

P105

P106

P107

P108

P109

P110

P111

P112

P113

P114

P115

P116

P117

P118

P119

P120

P121

P122

P123

P124

P125

P126

P127

P128

P129

P130

P131

P132

P133

P134

P135

P136

P137

P138

P139

P140

P141

P142

P143

P144

P145

P146

P147

P148

P149

P150

P151

P152

P153

P154

P155

P156

P157

P158

P159

P160

P161

P162

P163

P164

P165

P166

P167

P168

P169

P170

P171

P172

P173

P174

P175

P176

P177

P178

P179

P180

P181

P182

P183

P184

P185

P186

P187

P188

P189

P190

P191

P192

P193

P194

P195

P196

P197

P198

P199

P200

P201

P202

P203

P204

P205

P206

P207

P208

P209

P210

P211

P212

P213

P214

P215

P216

P217

P218

P219

P220

P221

P222

P223

P224

P225

P226

P227

P228

P229

P230

P231

P232

P233

P234

P235

P236

P237

Annual Campus

SECURITY REPORT

SECURITY REPORT

“2010”

DSU DEPARTMENT OF PUBLIC SAFETY

MAIN CAMPUS
Dover, Delaware

Delaware State University

Department of Public Safety

1200 North DuPont Highway

Dover, DE 19901-2277

302.857.6290

4444 On Campus Emergency • 302.857.7918 Tip Line

Visit us on the web at:

www.desu.edu